

TWO NEW FISH SPECIES OF THE GENUS *SCHISTURA* MCCLELLAND (CYPRINIFORMES: BALITORIDAE) FROM WESTERN GHATS, INDIA

Sreekantha, K.V. Gururaja, K. Remadevi, T.J. Indra and T.V. Ramachandra

Main article in Zoos' Print Journal 21(4): 2211-2216; Manuscript 1386; ©Zoo Outreach Organisation; www.zoosprint.org



Image 1. Schistura nagodiensis sp. nov. (SL. 26.0mm) paratype from type locality, (IISc/CES/WGBIS: 3-5-3-5-007).

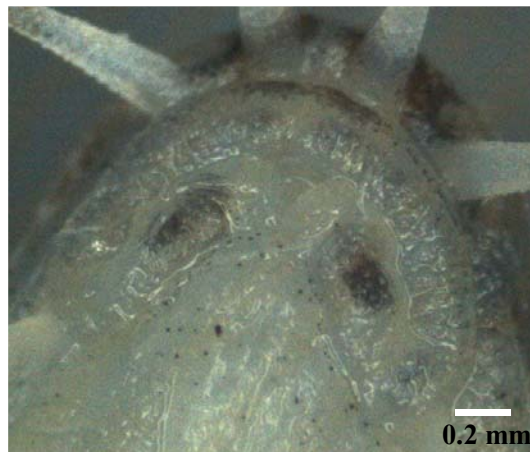


Image 2. Schistura nagodiensis - Ventral view of head



Image 3. Schistura sharavathiensis sp. nov. (SL. 32.0 mm) paratype from type locality, (IISc/CES/WGBIS: 3-5-3-5-008).



Image 4. *Schistura sharavatiensis* - Ventral view of head

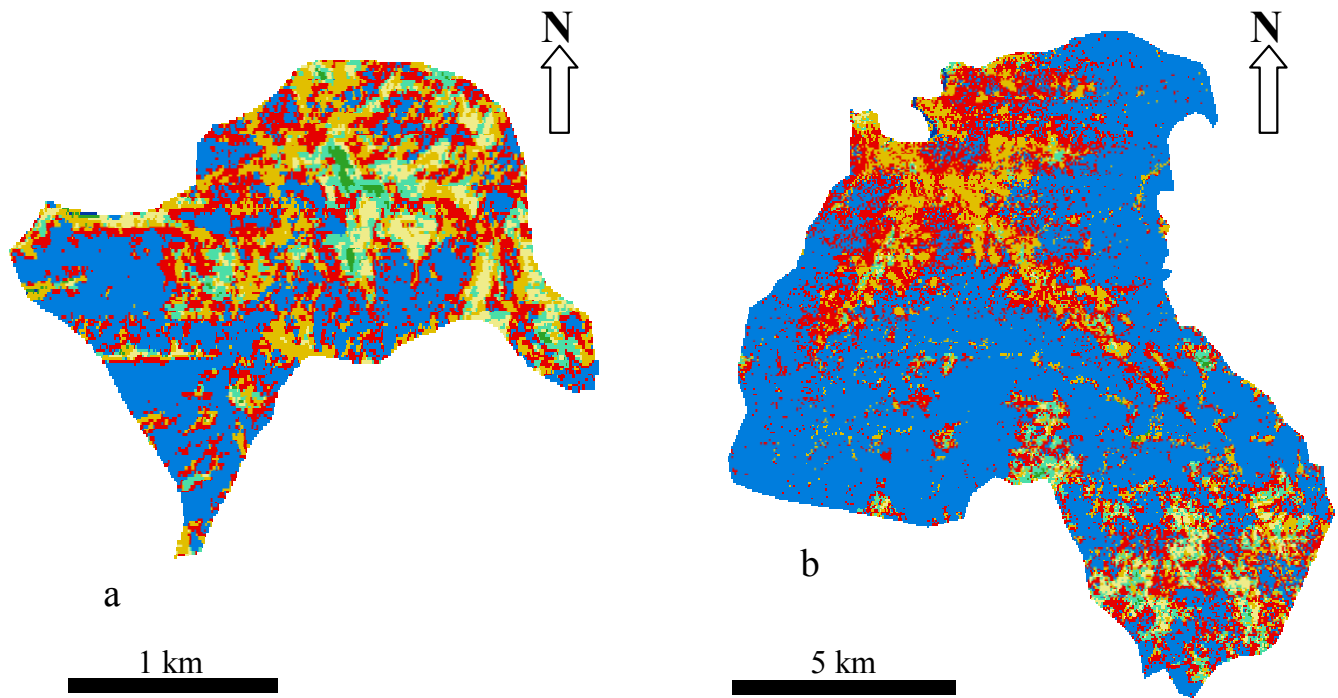


Figure 5. Classified image of the corresponding watersheds of the collection localities.
(a) Catchment of Algod, (b) Catchment of Dabbefalls

