

6. ENCROACHMENT OF LAKES AND NATURAL DRAINS

1. Physical integrity of lakes and storm water drains	1. Surveying and mapping of water body (including flood plains) and buffer zones (30 m as per BDA; 75 m as per NGT) and storm water drains
	2. Surveying and mapping valley zones (eco-sensitive zone as per RMP 2015, and green belt as per CDP 2005). Remove all encroachments without any consideration.
	3. Remove all encroachments (lake bed, Raja kaluves, storm water drains) to prevent calamities related to floods
	4. Identify the common lands, kharab lands, streams, drains, tracks and paths (as per cadastral / revenue maps). This land would be useful to setup waste water treatment plants (STP's) and constructed wetlands.
	5. Identify the areas required for setting up decentralised treatment plants (and if required mechanisms to acquire these lands for public utility)
	6. Stop narrowing and concretising rajakaluve (BBMP's deliberate action to obviate NGT norms (of 50m buffer)
2. Alteration in topography and unplanned concretisation	Refrain from granting any consent for establishment for large scale projects in these catchments with immediate effect (Bangalore is undergoing unplanned, un-realistic urbanisation)
3. Fragmented, un-co-ordinated lake Governance	1. Strengthen KLDCA – single agency / custodian to address all issues related to lakes (including maintenance, monitoring, management and removal of all illegalities) and interconnected drains. This helps in minimising fragmented governance. 2. Scientifically competent committee to address the lake issues.
Encroachment of lakebeds, valley zone and rajakaluves	Evict all encroachments without any considerations (as unauthorized occupation is leading to flooding of the region and affects life and property of many) 1. These common lands would be available for setting up STP, wetlands 2. Removal of encroachments of Rajakaluves and drains would re-establish interconnectivity among lakes so that water would move from one lake to another, enabling treatment of water (through aeration)

ENCROACHMENT DETAILS OF LAKES

Sl. No	Name of the Lake	Area in Acres	Encroachment area (acres)
1	Anjanangar	5.27	
2	Avalahalli	21.63	1.37
3	Ballehannu	6.65	2.14
4	Bikaspura	7.15	1.55
5	Chandranagar	7.21	1.34
6	Dasarahalli	27.83	6.5
7	Deepanjali nagar	7.55	1.9
8	Doddbidrekallu	40.42	3.03
9	Doddkalsandra	21.4	1.5
10	Doraikere	28.57	0.41
11	Dubasipalya	24.88	2.85
12	Gowdanpalya	9.75	4.1
13	Gubblala	8.01	
14	Halagevaderahalli	17.25	7.33
15	Handrahalli	16.15	1.9
16	Hegganhalli	6.29	2.49
17	Hemmigepura	17.5	5.31
18	Herohalli	34.82	1.7
19	Hoskere	54.14	10.11
20	Hoskerehalli	59.65	4.06
21	H Gollahalli/Varahasandra	19.65	2.01
22	Isro layout	7.15	1.09
23	Kempambudhi	43.45	3.79
24	Kengeri	32.4	1.06
25	Konankunte	10.3	1.3
26	Konasandra	36.68	2.76
27	Mallathalli	71.15	0.81
28	Mylasandra 1	12.16	
29	Mylasandra 2	16.49	
30	Nagarbhavi	9.18	3.18
31	Nayandahalli	15.45	2.67
32	Sankey	42.35	
33	Sompura	17.95	
34	Srinivaspura	7.5	4.5
35	Subramanyapura	18.06	6.45
36	Ullal	24.3	0.19
37	Uttarahalli	15.4	1.95
38	Yediyur	18.05	0.76

6.0 ENCROACHMENT OF LAKES – Reflects the extent of misappropriation

(POLYGON WITH YELLOW COLOUR REPRESENTS BOUNDARY OF LAKE AND POLYGON WITH RED REPRESENTS ENCROACHMENTS)

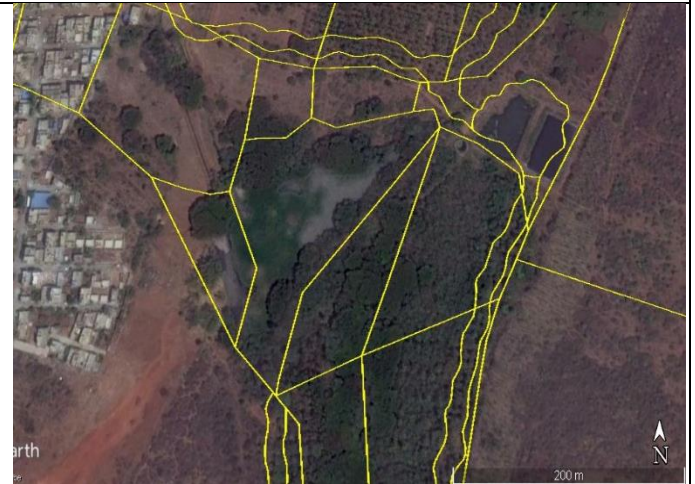
Encroachment of lakebeds, valley zone and rajakaluves

Evict all encroachments without any considerations (as unauthorized occupation is leading to flooding of the region and affects life and property of many)

3. These common lands would be available for setting up STP, wetlands
4. Removal of encroachments of Rajakaluves and drains would re-establish interconnectivity among lakes so that water would move from one lake to another, enabling treatment of water (through aeration)

ANJANANAGAR

Latitude-12°58'59.50"N to 12°59'01.36"N,
77°29'28.78"E to 77°29'35.87"E
Longitude-12°58'54.14"N to 12°59'02.12 "N,
77°29'30.5"E to 77°29'34.91"E



Lake spatial extent as per RTC-5.27 Acres

AVALAHALLI

Latitude-12°51'45.32"N to 12°51'55.04"N,
77°33'51.39"E to 77°34'05.60"E
Longitude-12°51'44.14"N to 12°52'02.91"N,
77°33'52.20"E to 77°34'01.43"E



Lake spatial extent as per RTC-21.63Acres
Encroachment -1.37Acres

BALLEHANNUKERE/ MALGALA

Latitude-12°58'42.29"N to 12°58'42.91"N,
77°31'35.31"E to 77°31'45.94"E
Longitude-12°58'38.65"N to 12°58'44.67"N,
77°31'35.85"E to 77°31'36.45"E



Lake spatial extent as per RTC-6.65Acres
Encroachment -2.14Acres

BIKASIPURA/VASANTNAGAR

Latitude-12°53'26.99"N to 12°53'28.42"N,
77°33'16.74"E to 77°33'27.73"E
Longitude-12°53'25.37"N to 12°53'32.19 "N,
77°33'24.11"E to 77°33'24.52"E



Lake spatial extent as per RTC-7.15Acres
Encroachment - 1.55Acres

CHANDRANAGAR

Latitude-12°53'55.05"N to 12°54'01.86"N,
77°33'52.54"E to 77°33'58.57"E
Longitude-12°53'54.68"N to 12°54'02.19 "N,
77°33'51.96"E to 77°33'56.09"E



Lake spatial extent as per RTC-7.21 Acres
Encroachment -1.34 Acres

DASARAHALLI

Latitude-13°02'22.53"N to 12°02'27.30"N,
77°30'37.81"E to 77°30'55.56"E
Longitude-13°02'21.92"N to 13°02'32.94"N,
77°30'39.68"E to 77°30'42.97"E



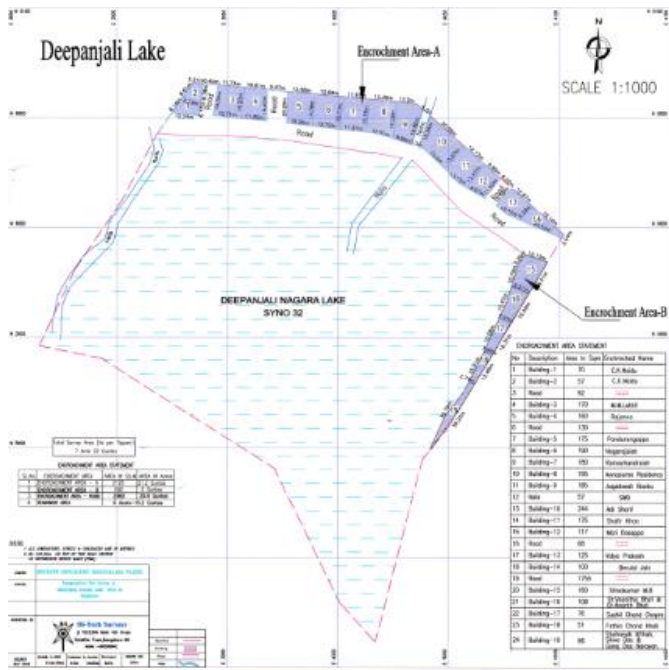
Lake spatial extent as per RTC-27.83 Acres
Encroachment as per BBMP-4.55Acres



Encroachment as per our calculation-6.5Acres



DEEPANJALI NAGAR



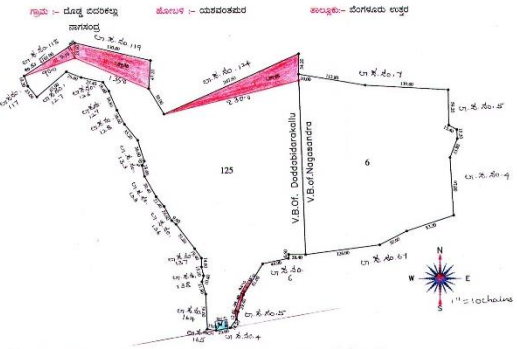
Lake spatial extent as per RTC-7.55 Acres
 Encroachment as per BBMP-1.18 Acres
 Encroachment as on Sept 2017-1.9 Acres

Latitude-12°56'58.21"N to 12°56'58.88"N,
 77°31'47.89"E to 77°31'56.16"E
 Longitude-12°56'53.54"N to 12°57'02.08"N,
 77°31'50.33"E to 77°31'52.26"E



DODDABIDAREKALLU

ಸದನ ಸಮಿತಿ ಸೂಚನೆಯಂತೆ ಮತ್ತು ಅಯುಕ್ತರು ಧರಣಿಮಾಪನ ಕಂದಾಯಿ ವ್ಯವಸ್ಥೆ ಮತ್ತು ಧರಣಿಮಾಪನಗಳ
 ಇಲಾಖೆ ರವರ ಆದೇಶ ಸಂಖ್ಯೆ :- SSLR/EST/DIGG/4025/2015/16 ರಂತೆ ರಿ.ಸಂ.ನಂ :- 6.125 ರ ಕೆರೆ ಜಾಬ್ಬು
 ಅಳತೆಯಾದ ಕಂದಾಯಿಗೂ ಸಹಿ



ಕ್ರ.ಸಂ.	ವಿವರಣೆ	ಮಾಪ	ಉದ್ದ	ಅಗಲ	ಒಟ್ಟು ವಿಸ್ತೀರ್ಣ
1	ಲಾಭಾಭಾವಿ ಸರ್ಕಾರ ಅಧೀನ	ಕ್ಯೂ	0.1	0.9/2	
2	ಲಾಭಾಭಾವಿ ಸರ್ಕಾರ ಅಧೀನ	ಕ್ಯೂ	0.1	0.7	
3	ಲಾಭಾಭಾವಿ ಸರ್ಕಾರ ಅಧೀನ	ಕ್ಯೂ	0.0	1.0	
4	ಸರ್ಕಾರಿ, ಸೇತುಬದ್ಧ ಅಧೀನದಲ್ಲಿ ಧರಣಿಮಾಪನ ಕಂದಾಯಿಗೂ ಸಹಿ	ಮೀಟರ್	0.0	0.8	
5	ಸರ್ಕಾರಿ ಧರಣಿ	ಧರಣಿ	0.0	0.2/2	

ವಿಸ್ತೀರ್ಣ	ಮಾಪ
ಲಾಭಾಭಾವಿ ಸರ್ಕಾರ ಅಧೀನ	2.29/2
ಲಾಭಾಭಾವಿ ಸರ್ಕಾರ ಅಧೀನ	0.07/2
ಲಾಭಾಭಾವಿ ಸರ್ಕಾರ ಅಧೀನ	2.01/8
ಸರ್ಕಾರಿ ಧರಣಿ	2.31/8

ವಿಸ್ತೀರ್ಣ	ಮಾಪ
ಲಾಭಾಭಾವಿ ಸರ್ಕಾರ ಅಧೀನ	16.3/6
ಲಾಭಾಭಾವಿ ಸರ್ಕಾರ ಅಧೀನ	16.3/6

Lake spatial extent as per RTC-40.42Acres
 Encroachment - 3.03Acres
 Encroachment as per SSLR-2.8 Acres

Latitude-13°02'39.01"N to 13°02'41.49"N,
 77°29'29.41"E to 77°29'54.40"E
 Longitude-13°02'26.29"N to 13°02'43.31"N,
 77°29'33.27"E to 77°29'39.41"E



DODDKALSANDRA

ಸದನ ಸಮಿತಿ ಸೂಚನೆಯಂತೆ ಮತ್ತು ಅಯುಕ್ತರು, ಭೂಮಾವನ ಕಂದಯಿ ವ್ಯವಸ್ಥೆ ಮತ್ತು ಭೂದಾಖಲೆಗಳ ಇಲಾಖೆ ರವರ ಆದೇಶ ಸಂಖ್ಯೆ : SSLR/EST/7D/6C-025/2015-16ರಂತೆ ರೀ.ಸ.ನಂ. 27 ರ ಕೆರೆ / ಕಟ್ಟೆ ಬಾಬಿ ಅಳತೆಯಂತೆ ಕಯಾರಿಸಿದ ನಕ್ಷೆ.

ಗ್ರಾಮ : ಸೋಮಶಿವಪುರ ಹೋಬಳಿ : ಉತ್ತರಗನ್ನಡಿ ತಾಲ್ಲೂಕು : ಬೆಂ. ನಕ್ಷಿಣ ಜಿಲ್ಲೆ : ಬೆಂ. ರಾಯಚೂರು

ಕಡತ : ಕೆರೆ/ಕಟ್ಟೆ ಅಳತೆಯಂತೆ ವಿಮರ್ಶಣೆ 21 16 ಅಳತೆಯಂತೆ ವಿಮರ್ಶಣೆ 21 16

ಕ್ರ. ಸಂ.	ಪ್ರಾಕೃತ ಭೂ.	ವ್ಯವಹಾರದಿಂದ ಬಂದ ಭೂ.	ವ್ಯವಹಾರ ಸ್ವಭಾವ	ವಿಸ್ತೀರ್ಣ ಎಸೆ	ನಂಟು	ಒಟ್ಟು ವಿಸ್ತೀರ್ಣ ಎಸೆ	ನಂಟು
01	ಕೆರೆ	2.5	ಕೆರೆ	1.9		4.4	1
02	ಕಟ್ಟೆ	1.5	ಕಟ್ಟೆ	0.3		1.8	2
03	ಕಟ್ಟೆ	0.5	ಕಟ್ಟೆ	0.6		1.1	3
04	ಕಟ್ಟೆ	0.5	ಕಟ್ಟೆ	0.6		1.1	4
05	ಕಟ್ಟೆ	0.5	ಕಟ್ಟೆ	0.6		1.1	5

ಕಯಾರಿಸಿದವರು: 1) ಕೆ.ಎಸ್. ಶಿವಶಂಕರ (ಕೆ.ಎಸ್. ಶಿವಶಂಕರ) 2) ಕೆ.ಎಸ್. ಶಿವಶಂಕರ (ಕೆ.ಎಸ್. ಶಿವಶಂಕರ)

ಪರಿಶೀಲಿಸಿದವರು: 1) ಕೆ.ಎಸ್. ಶಿವಶಂಕರ (ಕೆ.ಎಸ್. ಶಿವಶಂಕರ) 2) ಕೆ.ಎಸ್. ಶಿವಶಂಕರ (ಕೆ.ಎಸ್. ಶಿವಶಂಕರ)

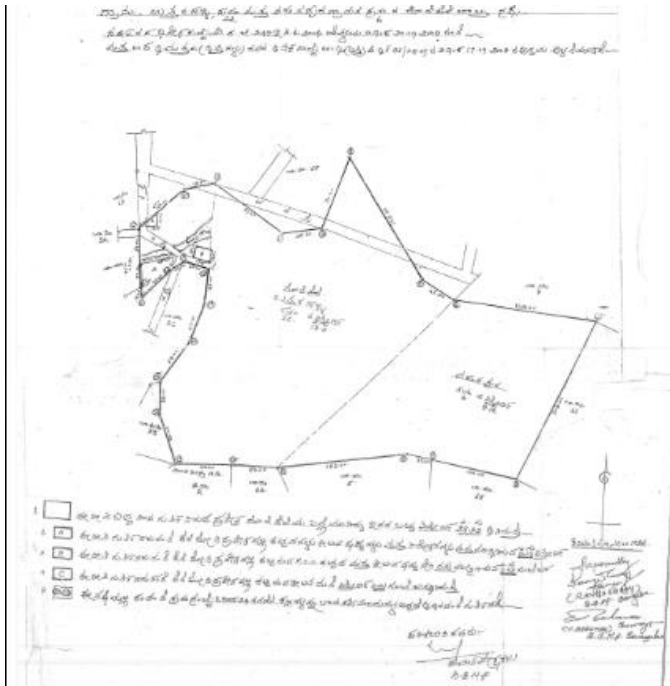
Lake spatial extent as per RTC-21.4Acres
 Encroachment - 1.5Acres
 Encroachment as per SSLR-1.87Acres

Latitude-12°52'51.03"N to 12°52'55.43"N,
 77°33'35.42"E to 77°33'47.73"E
 Longitude-12°52'49.61"N to 12°53'04.31"N,
 77°33'41.72"E to 77°33'44.87"E

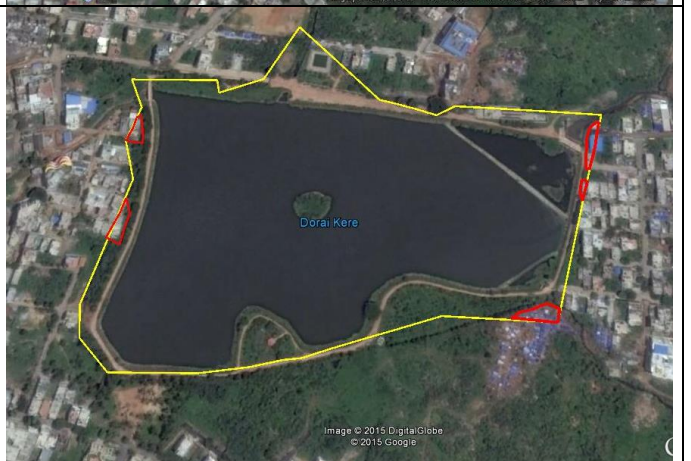
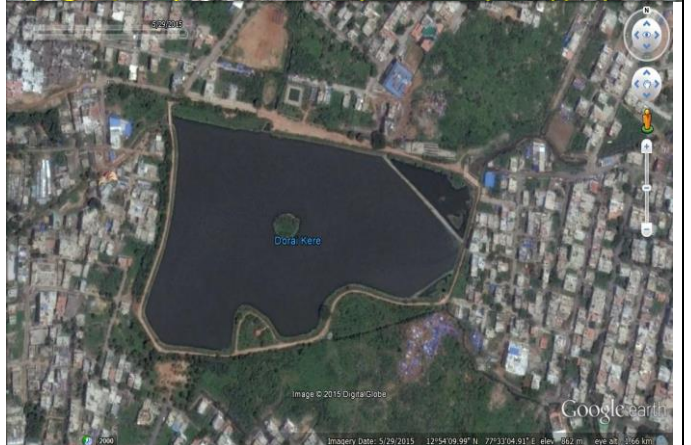
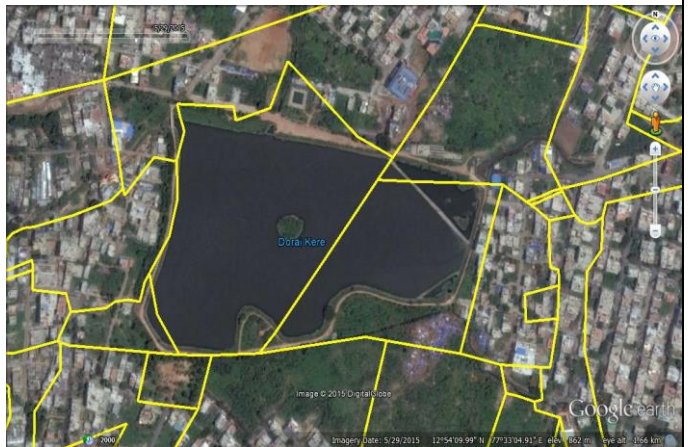


DORAIKERE





Latitude-12°54'07.35"N to 12°54'12.84"N,
77°32'55.00"E to 77°33'12.36"E
Longitude-12°54'04.71"N to 12°54'16.66"N,
77°32'56.44"E to 77°33'02.06"E



Lake spatial extent as per RTC-28.57Acres
Encroachment as per BBMP-0.35Acres



Encroachment as per our calculation-0.41Acres

<p>DUBASIPALYA</p>	<p>Latitude-12°55'53.25"N to 12°55'54.11"N, 77°29'35.33"E to 77°29'48.58"E Longitude-12°55'43.23"N 12°56'01.36"N, 77°29'42.40"E to 77°29'42.64"E</p>
	
	
<p>Lake spatial extent as per RTC- 24.88Acres Encroachment - 2.85Acres</p>	

GOWDANPALYA

Latitude-12°54'24.61"N to 12°54'29.37"N,
77°33'15.56"E to 77°33'29.41"E Longitude-
12°54'23.30"N to 12°54'31.65"N, 77°33'23.98"E to
77°33'26.13"E



Lake spatial extent as per RTC - 9.75Acres
Encroachment - 4.1Acres

GUBBALALA

Latitude-12°52'48.92"N to 12°52'52.00"N,
 77°32'21.00"E to 77°32'31.33"E
 Longitude-12°52'47.25 "N to 12°52'53.69"N,
 77°32'26.47"E to 77°32'28.4"E



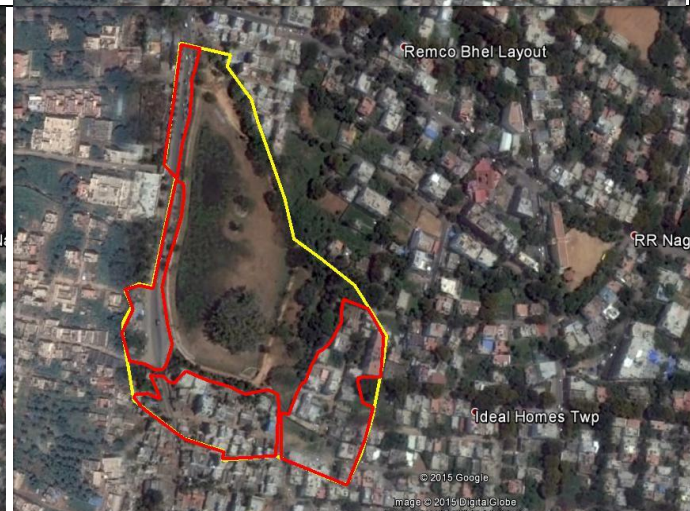
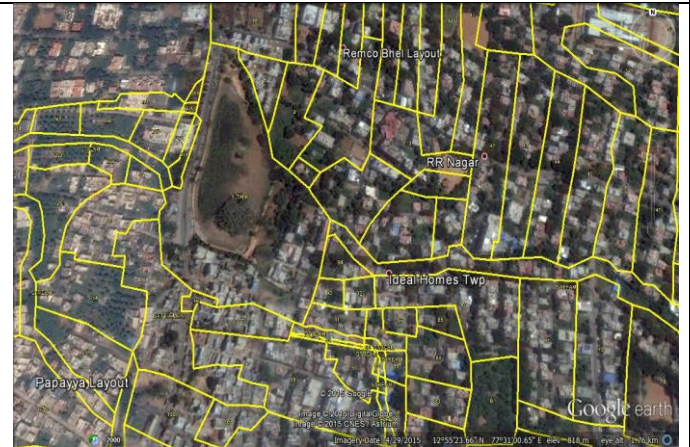
Lake spatial extent as per RTC-8.01 Acres

HALAGEVADERAHALLI

Latitude-12°55'23.73"N to 12°55'25.31"N,
77°30'49.93"E to 77°31'00.23"E
Longitude-12°55'18.27"N to 12°55'34.19"N,
77°30'52.37"E to 77°30'58.38"E



Lake spatial extent as per BBMP-17.25 Acres
Encroachment as per BBMP-4.52 Acres



Encroachment - 7.33 Acres

HANDRAHALLI



Lake spatial extent as per RTC-16.15Acres
Encroachment - 0.53Acres

Latitude-13°00'34.11"N to 13°00'40.88"N,
77°29'05.11"E to 77°29'15.89"E
Longitude-13°00'33.69"N to 13°00'45.32"N,
77°29'07.14"E to 77°29'07.24"E



Encroachment as per our calculation-1.9Acres

HEGGANAHALLI

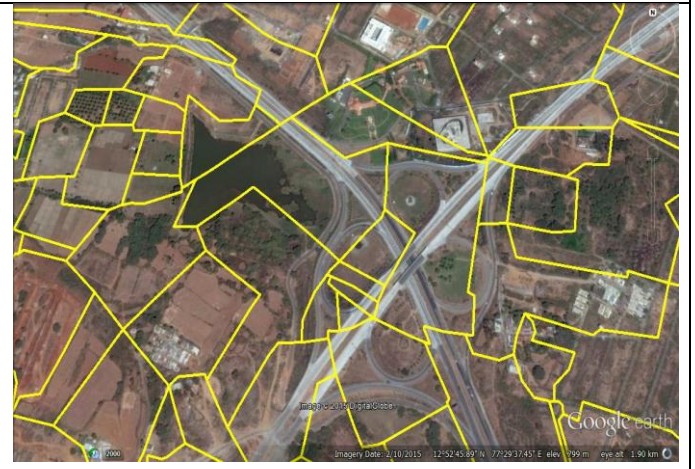
Latitude-13°00'37.37"N to 13°00'38.5"N,
77°30'48.82"E to 77°30'56.91"E
Longitude-13°00'40.61"N to 13°00'33.96"N,
77°30'53.99"E to 77°30'54.69"E



Lake spatial extent as per RTC-6.29Acres
Encroachment as per our calculation-2.49 Acres

HEMMIGEPUA/VARAHASANDRA

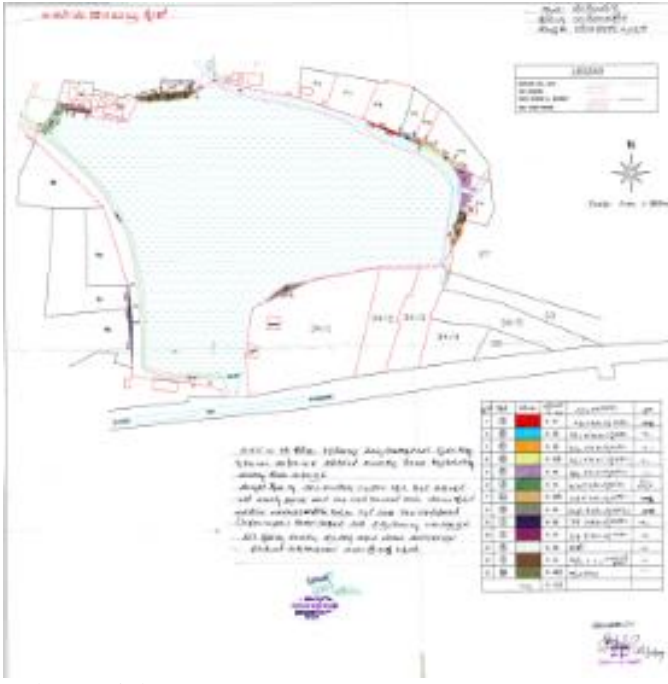
Latitude-12°52'45.49"N to 12°52'49.68"N,
77°29'24.61"E to 77°29'40.89"E
Longitude-12°52'42.00"N to 12°52'54.95"N,
77°29'25.68"E to 77°29'36.16"E



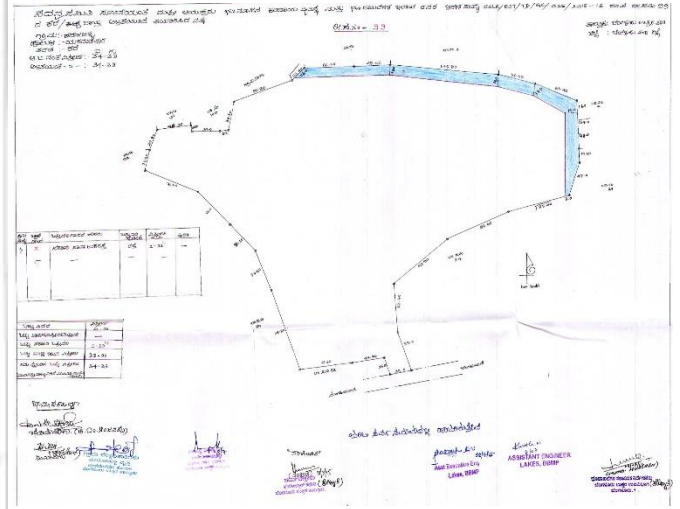
Lake spatial extent as per RTC-17.5Acres
Encroachment - 5.31Acres

HEROHALLI

Latitude-12°59'21.23"N to 12°59'23.48"N,
77°29'14.97"E to 77°29'34.23"E
Longitude-12°59'12.35"N to 12°59'26.15"N,
77°29'23.36"E to 77°29'25.49"E



Lake spatial extent as per RTC-34.82Acres
Encroachment as per BBMP-0.8Acres

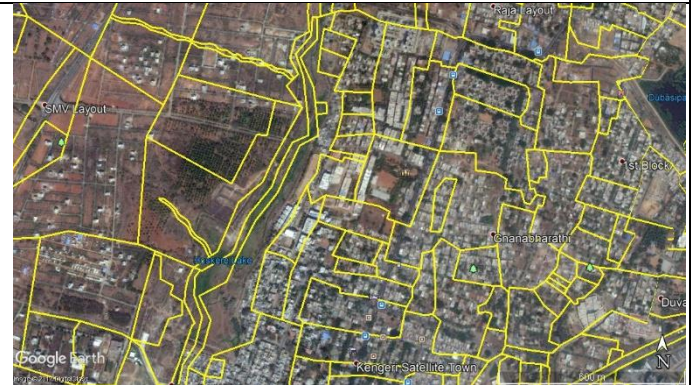


Encroachment as per SSLR-1.8Acres
Encroachment as per our calculation-1.7Acres



HOSKERE

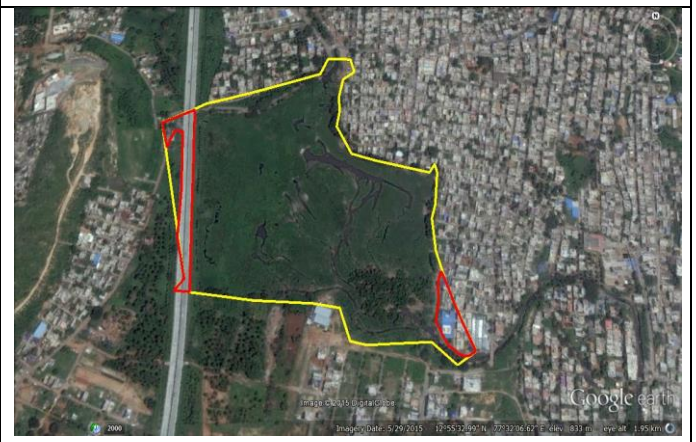
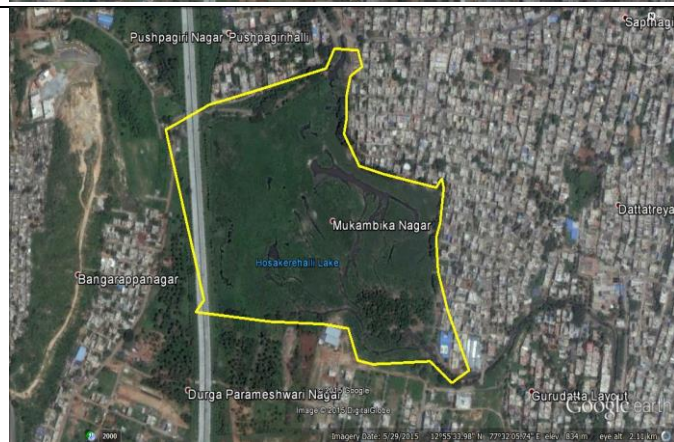
Latitude-12°55'31.71"N to 12°55'49.16"N,
77°28'45.69"E to 77°29'03.68"E Longitude-
12°55'20.81"N to 12°56'01.92"N, 77°28'50.03"E to
77°29'02.08"E



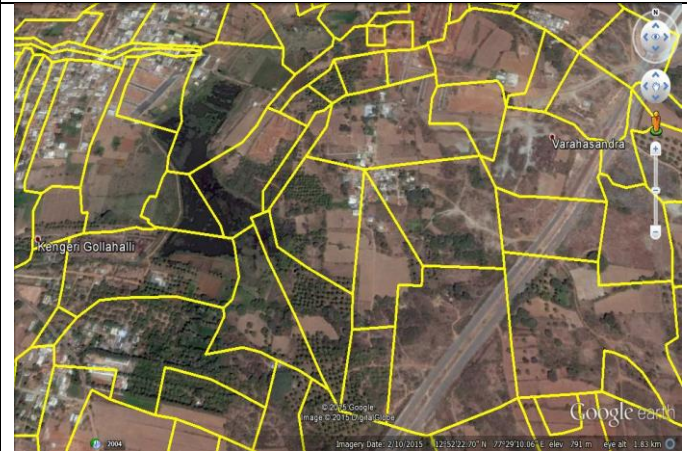

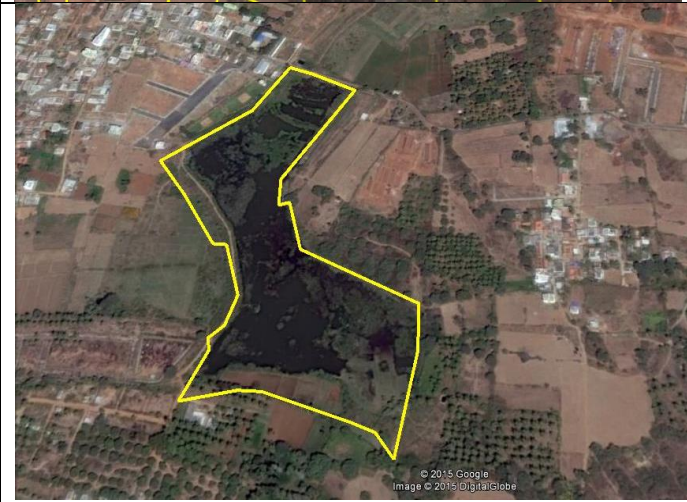
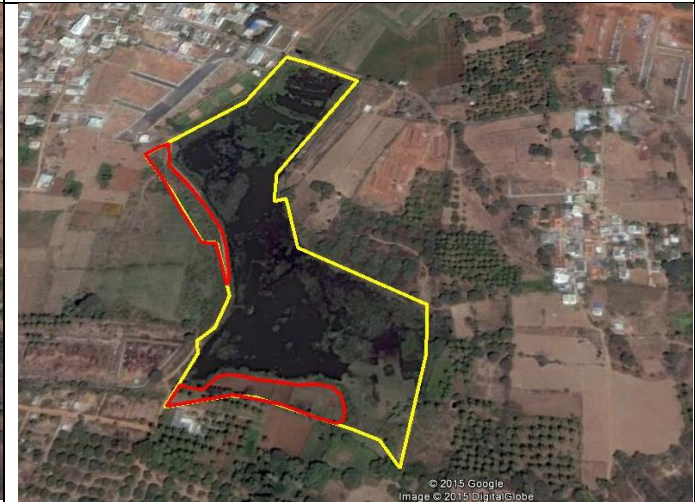
Lake spatial extent as per RTC-54.14Acres
Encroachment - 10.11Acres

HOSAKEREHALLI

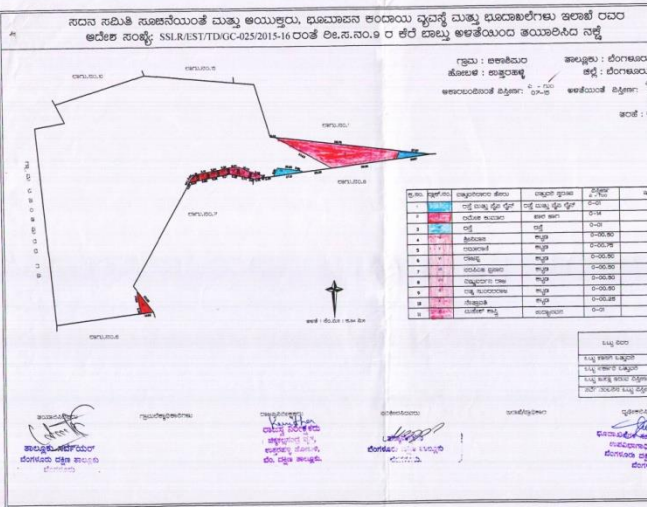
Latitude-12°55'25.25"N to 12°55'40.04"N,
77°31'51.86"E to 77°32'15.28"E Longitude-
12°55'23.60"N to 12°55'46.22"N, 77°32'05.26"E to
77°32'13.06"E



Lake spatial extent as per RTC-59.65Acres
Encroachment as per our calculation-4.06Acres

<p>H-GOLLAHALLI (VARAHASANDRA)</p>	<p>Latitude-12°52'23.57"N to 12°52'30.00"N, 77°28'53.81"E to 77°29'05.80"E Longitude-12°52'17.65"N to 12°52'35.28"N, 77°28'59.24"E to 77°29'04.54"E</p>
	
	
<p>Lake spatial extent as per RTC-19.65Acres</p>	<p>Encroachment - 2.01Acres</p>

ISRO LAYOUT



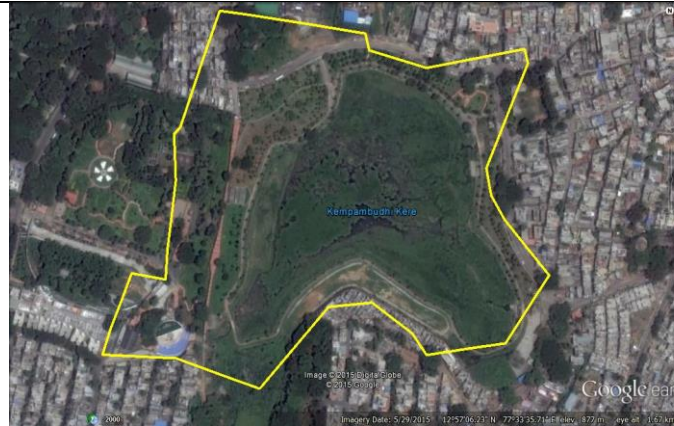
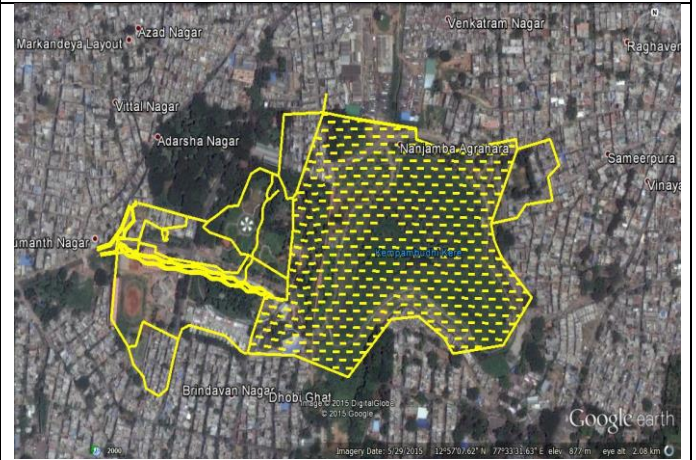
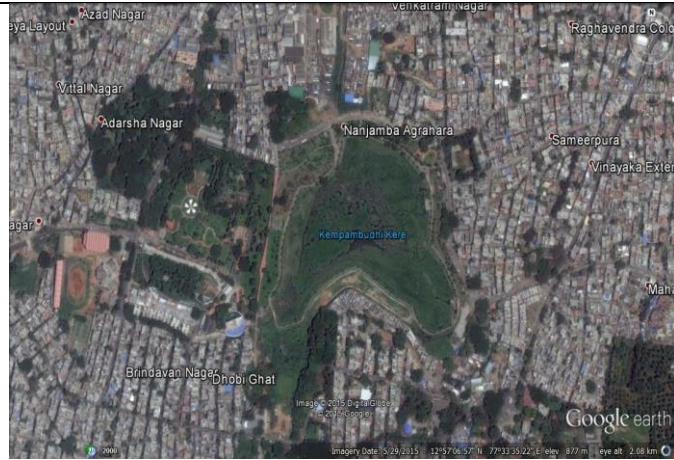
Latitude-12°53'49.45"N to 12°57'03.85"N,
 77°33'13.44"E to 77°33'18.36"E
 Longitude- 12°53'48.24"N to 12°53'54.34"N,
 77°33'15.12"E to 77°33'16.00"E



Area as per our calculation-7.15Acres
 Encroachment – 1.09Acres

KEMPAMBUDHI

Latitude-12°57'00.57"N to 12°57'03.85"N,
77°33'24.33"E to 77°33'44.59"E
Longitude-12°56'58.93"N to 12°57'14.58"N,
77°33'29.98"E to 77°33'31.79"E



Area as per our calculation-43.45Acres
Encroachment - 3.79Acres

KENGERI

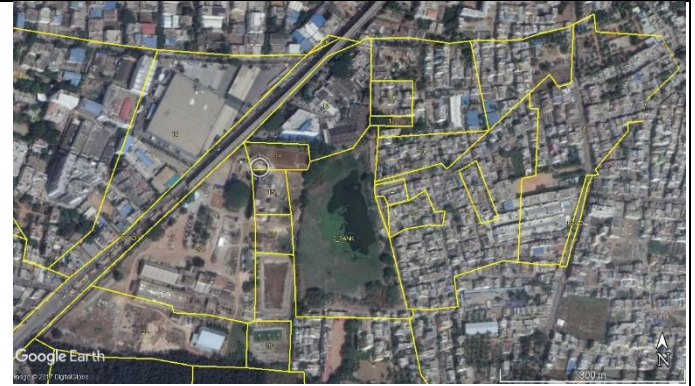
Latitude-12°54'49.13"N to 12°55'06.69"N,
77°29'06.05"E to 77°29'25.33"E
Longitude-12°54'47.21"N to 12°55'07.93"N,
77°29'08.08"E to 77°29'23.26"E



Lake spatial extent as per RTC-32.4Acres
Encroachment - 1.06Acres

KONANKUNTE

Latitude-12°53'24.62"N to 12°53'31.89"N,
77°34'02.91"E to 77°34'10.11"E
Longitude-12°52'23.98 "N to 12°53'34.49"N,
77°34'08.07"E to 77°34'09.77"E



Lake spatial extent as per RTC-10.3Acres
Encroachment - 1.3Acres

KONASANDRA

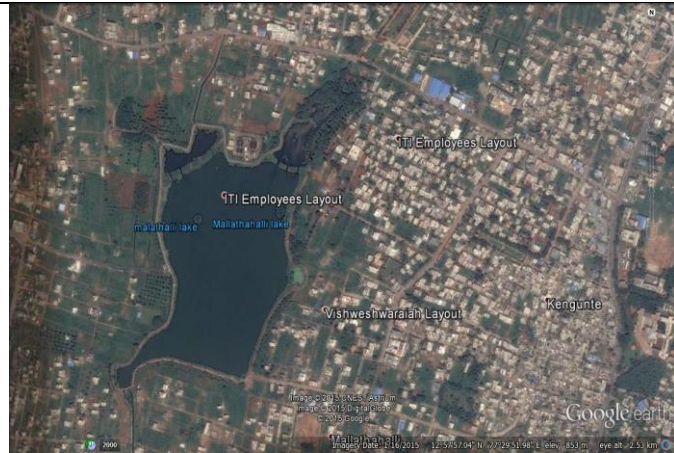
Latitude-12°53'28.17"N to 12°53'34.46"N,
77°28'51.47"E to 77°29'12.4"E
Longitude-12°53'26.92"N to 12°53'37.78"N,
77°29'05.95"E to 77°29'06.02"E



Lake spatial extent as per RTC-36.68Acres
Encroachment - 2.76Acres

MALLATHHALLI

Latitude-12°57'45.00"N to 12°58'07.34"N,
77°29'27.89"E to 77°29'54.86"E
Longitude-12°57'42.17"N to 12°58'13.78"N,
77°29'32.24"E to 77°29'52.69"E



Lake spatial extent as per RTC-71.15Acr
Encroachment - 0.81Acres

MYLASANDRA 1

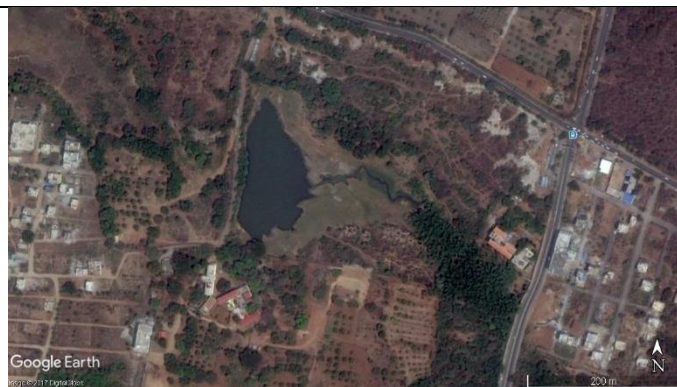
Latitude-12°54'24.15"N to 12°54'27.51"N,
77°29'29.82"E to 77°29'39.53"E
Longitude- to 12°54'23.79"N 12°54'35.95"N,
77°29'32.89"E to 77°29'39.07"E



Area as per our calculation-12.16 Acres

MYLASANDRA 2

Latitude-12°54'17.03"N to 12°54'21.08"N,
 77°29'40.44"E to 77°29'54.83"E
 Longitude-12°54'18.27"N to 12°54'28.90"N,
 77°29'42.26"E to 77°29'54.72"E



Area as per our calculation-16.49 Acres

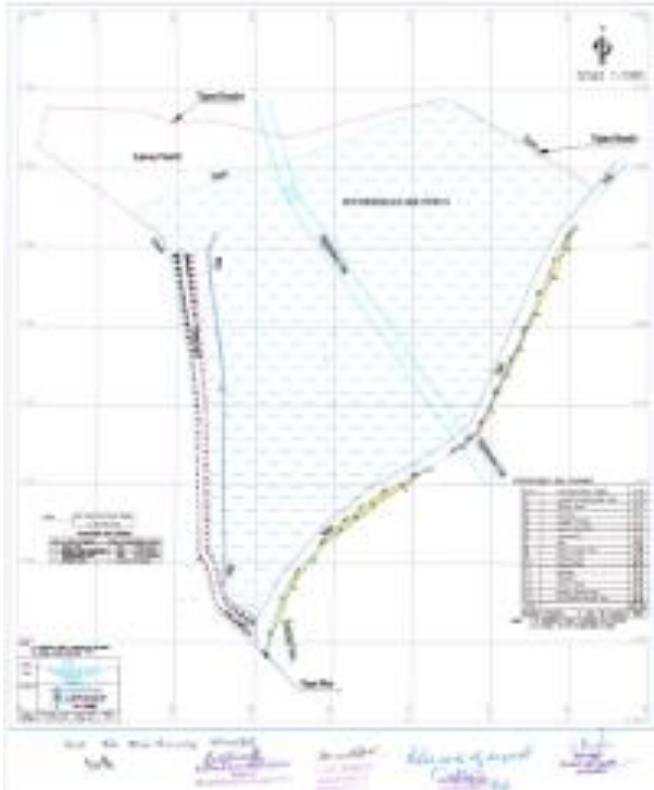
NAGARBHAVI

Latitude-12°57'53.65"N to 12°57'56.33"N,
 77°30'27.49"E to 77°30'36.09"E
 Longitude-12°57'50.68"N to 12°58'00.28"N,
 77°30'28.92"E to 77°30'30.80"E



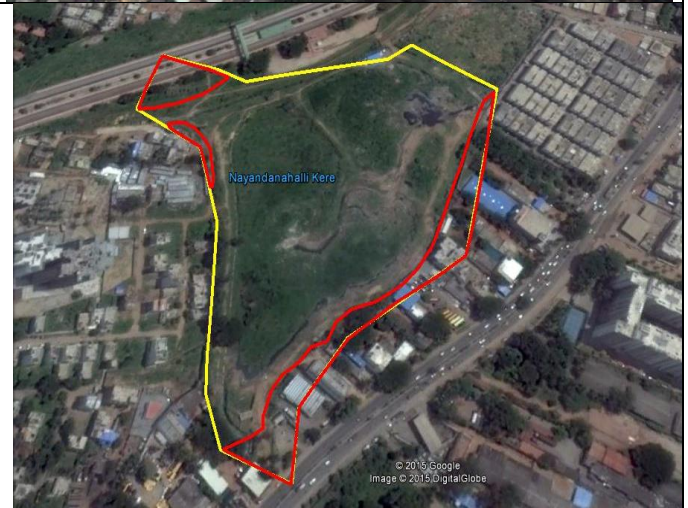
Area as per our calculation- 9.18 Acres
 Encroachment -3.18 Acres

NAYANDAHALLI



Lake spatial extent as per RTC-15.45Acres
Encroachment as per BBMP -2.14Acres

Latitude-12°56'26.11"N to 12°56'26.71"N,
77°31'10.83"E to 77°31'22.34"E
Longitude-12°56'16.26"N to 12°56'28.78"N,
77°31'16.74"E to 77°31'19.39"E



Encroachment - 2.67Acres

SANKEY

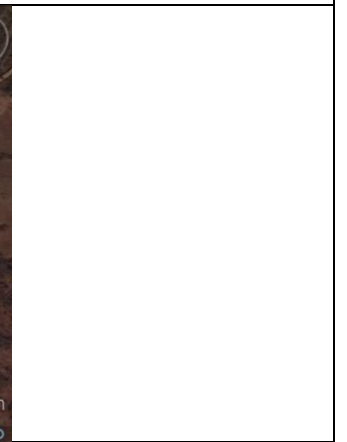
Latitude-13°00'28.50"N to 13°00'30.30"N,
 77°34'18.73"E to 77°34'38.42"E
 Longitude-13°00'26.18"N to 13°00'46.38"N,
 77°34'22.76"E to 77°34'37.07"E



Lake spatial extent as per RTC-42.35 Acres

SOMPURA

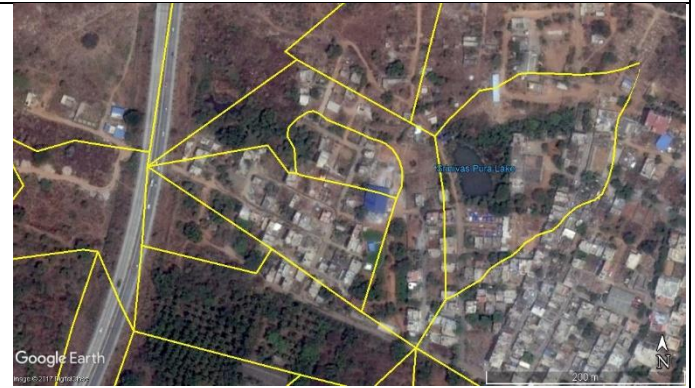
Latitude-12°52'27.23"N to 12°52'30.49"N,
77°29'50.42"E to 77°30'04.81"E
Longitude-12°52'23.80"N to 13°52'36.63"N,
77°29'53.76"E to 77°30'02.87"E



Lake spatial extent as per RTC-17.95Acres

SRINIVASPURA

Latitude-12°54'51.64"N to 12°54'53.37"N,
77°32'01.84"E to 77°32'08.90"E
Longitude-12°54'46.31"N to 12°54'54.21"N,
77°32'02.51"E to 77°32'08.66"E



Lake spatial extent as per RTC-7.5 Acres
Encroachment -4.5 Acres

SUBRAMANYAPURA

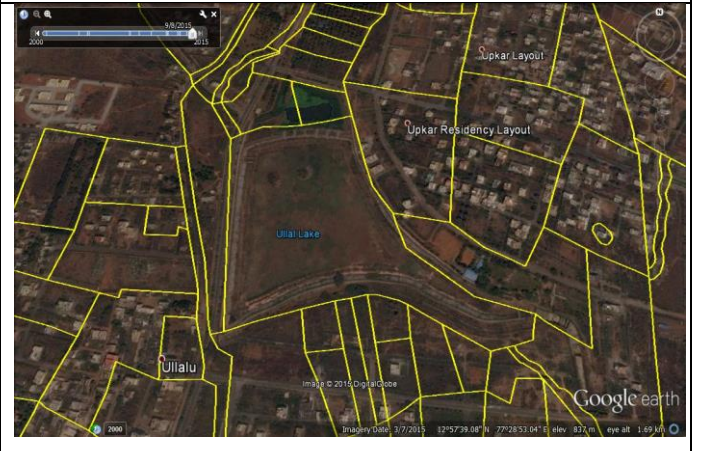
Latitude-12°53'50.20"N to 12°53'43.35"N,
77°32'26.38"E to 77°32'39.47"E
Longitude-12°53'52.36"N to 12°53'37.58"N,
77°32'35.48"E to 77°32'32.84"E



Lake spatial extent as per RTC-18.06Acres
Encroachment - 6.45Acres

ULLAL

Latitude-12°57'33.26"N to 12°57'34.06"N,
77°28'46.26"E to 77°29'03.20"E
Longitude-12°57'31.86"N to 12°57'46.47"N,
77°28'53.25"E to 77°29'00.47"E



Lake spatial extent as per RTC-24.3Acres
Encroachment -0.19Acres

UTTARAHALLI

Latitude-12°54'27.81"N to 12°54'34.63"N,
77°32'21.87"E to 77°32'38.74"E
Longitude-12°54'23.39"N to 12°54'35.73"N,
77°32'30.20"E to 77°32'38.01"E



Lake spatial extent as per RTC-15.4Acres

Encroachment as per our calculation-1.95Acres

YEDIYUR

Latitude-12°55'57.35"N to 12°55'59.31"N,
77°34'31.22"E to 77°34'42.41"E
Longitude-12°55'55.66"N to 12°56'05.62"N,
77°34'32.29"E to 77°34'33.61"E



Area as per our calculation-18.05 Acres
Encroachment - 0.76Acres