

Nature Science Internship Programme



Vagdevi Vilas School - Bidadi

Team Members

Students

1. Amulya V
2. Nidhi K R
3. Pruthvi Raje Gowda S
4. Baby Kruthika K
5. Abhin V S
6. Kiran R G
7. Deepthi B
8. Prakruthi Urs B S
9. Bhuvan V
10. Suhas S Vasishta

Teachers

Srinidhi C M

Smt. Jagadamba

Terrestrial Study Location :

VVS - Bidadi Campus

Latitude : 12.741848

Longitude : 77.429847

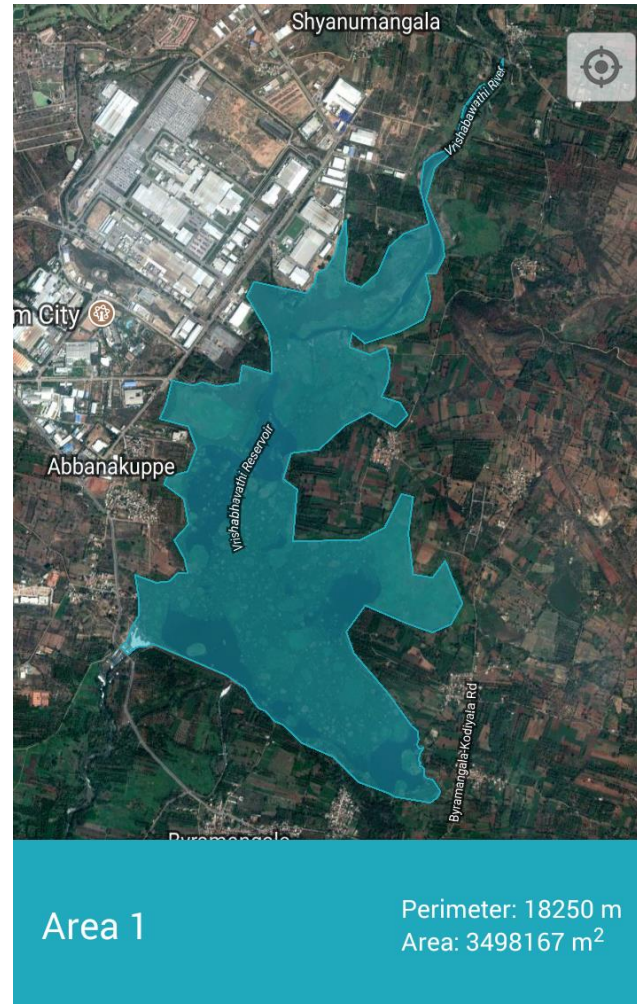


Aquatic Study Location :

Vrushabhavathi Reservoir

Latitude : 12.765304

Longitude : 77.423768



Tree study

Date :8-9-17

Time : 2 pm

Weather: Sunny

Local name	Scientific name	Number	Flowering/ Fruiting/Leafy	Dependents
Bell Flower	Spathodea Campanulata	1	Flowering	Ants, birds.
Sampige	Michelia Champaca	1	Leafy	Ants
Mango	Magnifera indica	4	leafy	Ants
Papaya	Carica papaya	1	Fruiting	Ants
Silver oak	Grevillea Robusta	11	Leafy	

Local name	Scientific name	Number	Flowering/ Fruiting/Leafy	Dependents
Guava tree	<i>Psidium guajava</i>	4	Leafy	Squirrels
Neem tree	<i>Azadirachta indica</i>	2	Leafy	Crows
Honge mara	<i>Pongamina pinnata</i>	13	Leafy	Crows, Squirrels
Pine tree	<i>Pinus</i>	3	Leafy	Ants, spiders
Beetle nut palm	<i>Areca catechu</i>	11	Fruiting	Ant, spiders
False cotton		6	Leafy	Birds
Teak wood	<i>Tectona grandis</i>	4	Leafy	
Coconut tree	<i>Cocos nucifera</i>	13	Fruiting	Squirrels
Curry Leaf	<i>Murraya koenigii</i>	1	Leafy	
Tamarind	<i>Tamarindus indica</i>	3	Fruiting	White browed fantail
Singapore cherry	<i>Muntingia calabura</i>	3	Fruiting	Birds, ants

Oxygen Production

Plant	Area of leaf	Number of leaves	Oxygen produced / hour
Curry leaves	2 unit squares	135	324 ml
Guava	39 unit squares	59	2761.2ml



Bird Study

Common name	Scientific name	activity	numbers
Pale-billed Flowerpecker	Dicaeum erythrorhynchos	Perching	1
White browed fantail	Rhipidura aureola	Nesting	8
Red-whiskered bulbul	Pycnonotus jocosus	Perching	1
Rose ringed parakeet	Psittacula krameri	Nesting	2
Common Myna	Acridotheres tritis	Perching	2
House crow	Corvus splendens	Feeding	1
Kite	Milvus migrans	perching	1
Red Wattled Lapwing	Vanellus indicus	Feeding	1
Common tailor bird	Orthotomus sutorius	Perching	1
Little Egret	Egretta garzetta	Perching	1

Bird Study





Butterfly study

- ▶ Common rose
- ▶ Common leopard
- ▶ Mottled emigrant
- ▶ Psyche
- ▶ Tailed Jay
- ▶ Common emigrant
- ▶ Tawny coster
- ▶ Common Gull
- ▶ White orange tip
- ▶ Striped tiger

1. Common sailor



2. Common grass yellow



3. Common bush brown



4.Common three ring



5. Angled castor



6. Uraniid White Moth



7. Owl Eye Hawk Moth



8. Emerald moth



9. Common Indian Crow

Day-1



Day-2



Day-3



Day-4





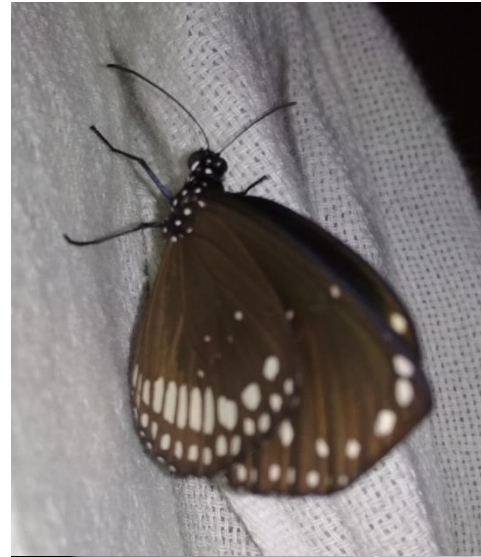
Day 5



Day-6



Day-7







Water analysis

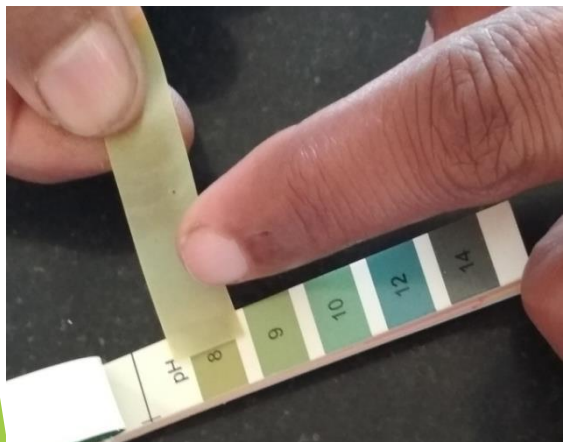
DATE : 12/10/2017
Weather : Sunny

Time : 10.00 am
LOCATION : Vrushabavati reservoir

Parameter	Inlet	Outlet
Temperature	25°C	26°C
Turbidity	50 NTU	150 NTU
pH	8.6	8.4
Conductivity	871	665



Parameter	Inlet	Outlet
Dissolved oxygen	3.6 mg/litre	2.5 mg/litre
Chlorides	113.4 mg/litre	92 mg/litre
Total hardness	232 mg/litre	184 mg/litre
Flouride	0.5 mg/litre	1.5 mg/litre
Nitrate	10 mg/litre	45 mg/litre
Iron	(0.3-0.5) mg/litre	1 mg/litre
Ammonia	<1 mg/litre	3 mg/litre
Residual chlorine	<0.2 mg/litre	0.5 mg/litre
Phosphorous	1 mg/litre	0.1mg/litre



Colour Comparison Chart (Units: mg/l)
 रंग तुलनात्मक चार्ट (इकाई: मिलीग्राम/लीटर)

Fluoride / फ्लोराइड			
	0.6	1.5	3.0
Residual Chlorine / अवशिष्ट क्लोरीन			
	0.2	0.5	1.0
Phosphorous / फॉस्फोरस			
	0.1	0.5	1.0
Nitrate as Nitrate / नाइट्रेट			
	10	45	100
Iron / लोहा			
	0.3	1.0	3.0
Ammonia / अमोनिया			
	1.0	2.0	3.0

Micro-organisms in water sample



Soil Test

Sample	Field Density (g/cm ³)	Bulk Density (g/cm ³)	pH	Texture	Colour	% of Water content
1	0.98	0.82	7	coarse	Brown	19.51
2	1.06	0.97	7	coarse	Brown	9.2



Future work

- ▶ Green Sunday
- ▶ Textile study
- ▶ Carbon foot print
- ▶ Waste management

Thank You

The background features abstract, overlapping geometric shapes in various shades of green, ranging from light lime to dark forest green. These shapes are primarily located on the right side of the frame, creating a modern, layered effect. The text 'Thank You' is centered horizontally and rendered in a bold, dark grey sans-serif font.