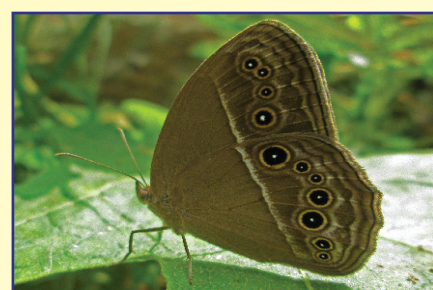
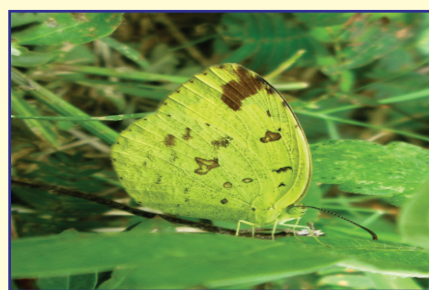




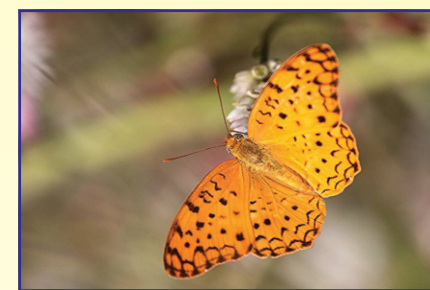
BLUE MORMON: Very large in size with major black in colour, hind wing is pale blue.



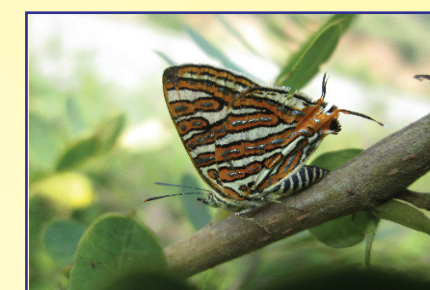
COMMON BUSH BROWN: Dark brown, fore wing with prominent eye spots. A white band and eye spots may be present on hind wing. Found among the leaf litters in the forests. Flutters close to the ground.



COMMON GRASS YELLOW: Bright yellow with black borders. Underside is marked with small, narrow black markings. Flight is weak. Slightly larger than the smaller once.



COMMON LEOPARD: Medium sized orange coloured butterfly with rows of black spots on both the wings. Flight is fast.



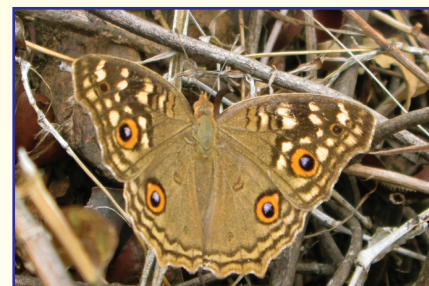
COMMON SILVERLINE: Small sized butterfly. Underside with red black and silver centered bands. Upper side fore wing has an orange patch. Flight is very fast, mostly found close to the ground.



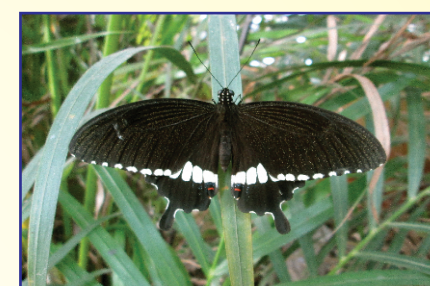
INDIAN MEALMOTH: Commonly found in kitchens and also known as flour moth. The larvae are very difficult to get rid of, and can crawl on ceilings and spin cocoons in rooms other than the kitchen.



COMMON CASTOR: Medium sized in Dark reddish brown with fine black lines across both the wings. Slow sailing flight, common around castor plants.



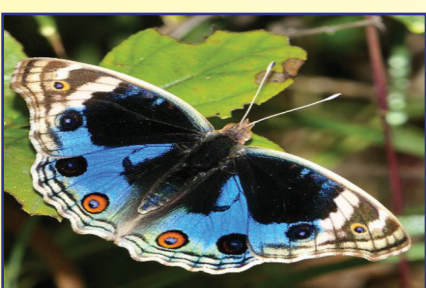
LEMON PANSY: Mostly brown in colour and medium sized butterfly. Lemon yellow spots on the fore wings. Small eye spots on each wing. Medium gliding flight. Common in gardens.



COMMON MORMON: Large sized with tailed hind wings. Black coloured with a row of cream coloured spots across the hind wing. Fast flying found commonly in forests and gardens.



COMMON THREE RING: Light brown. Underside has a big eye spot on the fore wing, 2 to 3 small black eye spots on the hind wing is visible. Hopping flight. Flies close to ground.



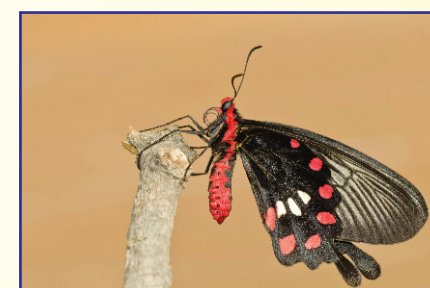
BLUE PANSY: Blue in colour with white band on forewing. Two eye spots on each wing. Swift flying close to the ground level.



COMMON CERULEAN: Upper wing sky blue with thread like tails. Underside is brown or grey with white lines or pale brown bands. Flight is weak. Flies close to ground levels. Small in size.



COMMON INDIAN CROW: Medium sized butterfly with mainly black in colour. Two rows of marginal white spots on the wings. Slow and gentle flight. Common in gardens and forests.



COMMON ROSE: Black in colour with red body, white spots on the hindwing, hind wing is elongated and fairly slow flying butterfly. Large in size.



CRIMSON ROSE: Mainly Black and Large in size. Hindwings are tailed.



COMMON BARON: Medium sized butterfly with powerful and gliding flight. Dark brownish green with darker markings. Fore wing is pointed.



COMMON EVENING BROWN: Dark brown in colour. Medium sized. Fore wing is tipped with a black eye spot. Hind wing is toothed. Found among the leaf litters. Camouflaged. Flight is jerky. Active during dusk.



COMMON JAY: Large sized with major black colour. A light blue band on the wings. Fore wing with marginal spots. Flight is very rapid.



COMMON SAILOR: Medium sized with major black in colour with 3 white horizontal white bands made up of spots. Flight is sailing with wings held horizontal. Seen in sunny forest streams and clearings.



DANAID EGGFLY: Medium sized jet black coloured butterfly with big oval white patches on both the wings. Flight is fairly slow.

EYES ON NATURE

EYES ON NATURE

EYES ON NATURE

EYES ON NATURE

EYES ON NATURE

Photo Credits :Chaturved Shet R
Deepak Puttur / Vrijulal M V / Google



BARONET: Medium sized, tawny orange coloured butterfly with small black dots on the hind wing. a large black spot is present at middle of the fore wing.



PEA BLUE: Small sized, dull violet blue butterfly with underside light white rusty stripes. Flight is fast and close to ground.



RED PIERROT: Small sized and weak flying butterfly. Upper side is black with red hind wing. Underside is white with black spots and orange-red hind wing border. Common in rocky areas and forests.



YELLOW ORANGE TIP: Small sized, yellow coloured butterfly. Fore wing with black and orange tip. Flight is hurried and can be found close to the ground.



TAWNY COSTER: Long winged, medium sized, mainly orange in colour. With a few black spots. Hind wing with a white spotted black border. Flight is slow and close to the ground.



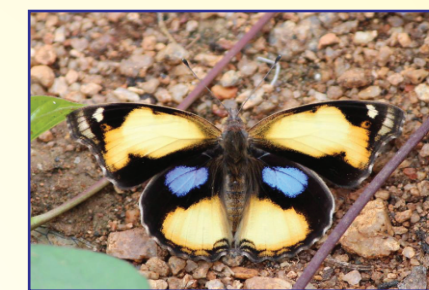
COMMON GULL: Medium sized and fast flying butterfly. Fore wing without a hockey stick mark. Underside is yellow and veins are black.



PIONEER: Mainly white, thick black borders to both the wings. Fore wings have got hockey stick marks. Underside is yellow. Medium sized with jerky flight.



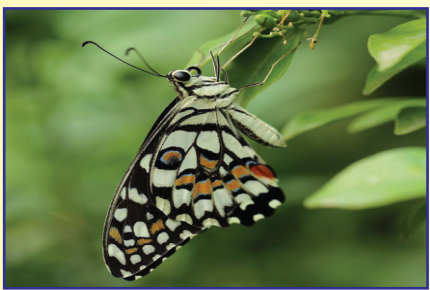
STRIPED TIGER: Slightly larger than the medium sized once. Major Orange with veins heavily black and broader than the plain tiger butterfly. Fore wings with white spots. Slow flight found in wooded areas.



YELLOW PANSY: medium sized with major yellow in colour. Prominent blue patch on hindwings, quick flying close to the ground level.



DARK BLUE TIGER: Medium sized mainly black in colour. Numerous pale bluish and whitish spots and dark markings on both the wings. Gentle flight, commonly found in gardens. Slightly larger than the Blue Tiger.



LIME BUTTERFLY: Mostly black. Large in size. Yellow spots and an irregular band on the wings. Flight is fast. Common in gardens.



PLAIN TIGER: Medium sized butterfly with Mostly orange in colour with slow flight. Fore wing with white spots. Three black spots on the hind wing. Common around gardens and open fields.



TAILED JAY: Large sized, mainly black coloured butterfly with bright green small spots all over the wings. Fond of flowers. Commonly found in gardens. Rapid and restless flier.



CHOCOLATE PANSY: medium sized with chocolate brown with paler bands. Hind wing with row of small eye markings.



COMMON JEZEBEL: Medium sized with Major White in colour, hind wing is yellow with red spots. Slow flight found near tree tops.



MOTTLED EMIGRANT: Greenish or yellowish white with thin borders. Flight is very fast and zigzag. Found in dry areas.



PSYCHE: Small sized white coloured butterfly with weak flight. Sits with wings closed. Large black spot on the fore wing is present.



WHITE ORANGE TIP: Small sized, white coloured butterfly. Fore wing with a broad, black and orange tip. Flight is hurried and can be found close to the ground.



ANGLED CASTOR: Medium sized butterfly mainly dark reddish brown in colour with fine black lines across both the wings. Slow and sailing flight, associated with castor plants.



COMMON EMIGRANT: Sulphur yellow, whitish or yellow whitish, medium sized butterfly. Upper wings with narrow black borders. Very common in gardens. Flight is very fast.