

*Demo
prepared by :*



*Demo
sponsored by:*



*WELCOME
to
The Land Use Database :*

*Demo-4 :
Land Use Classes*

Shown is how to define Land Use Classes

Emphasis is put on the following software aspects :

- 1 The structure of Land Use Classification Systems.**
- 2 Add a new Land Use Classification System.**
- 3 Add a new Land Use Class.**
- 4 Land Use Purpose Classifiers.**
- 5 Operation Sequence and Context Classifiers.**
- 6 Printing Land Use Classes.**

First of all, select the **Data Entry** option of the **Main Menu**.

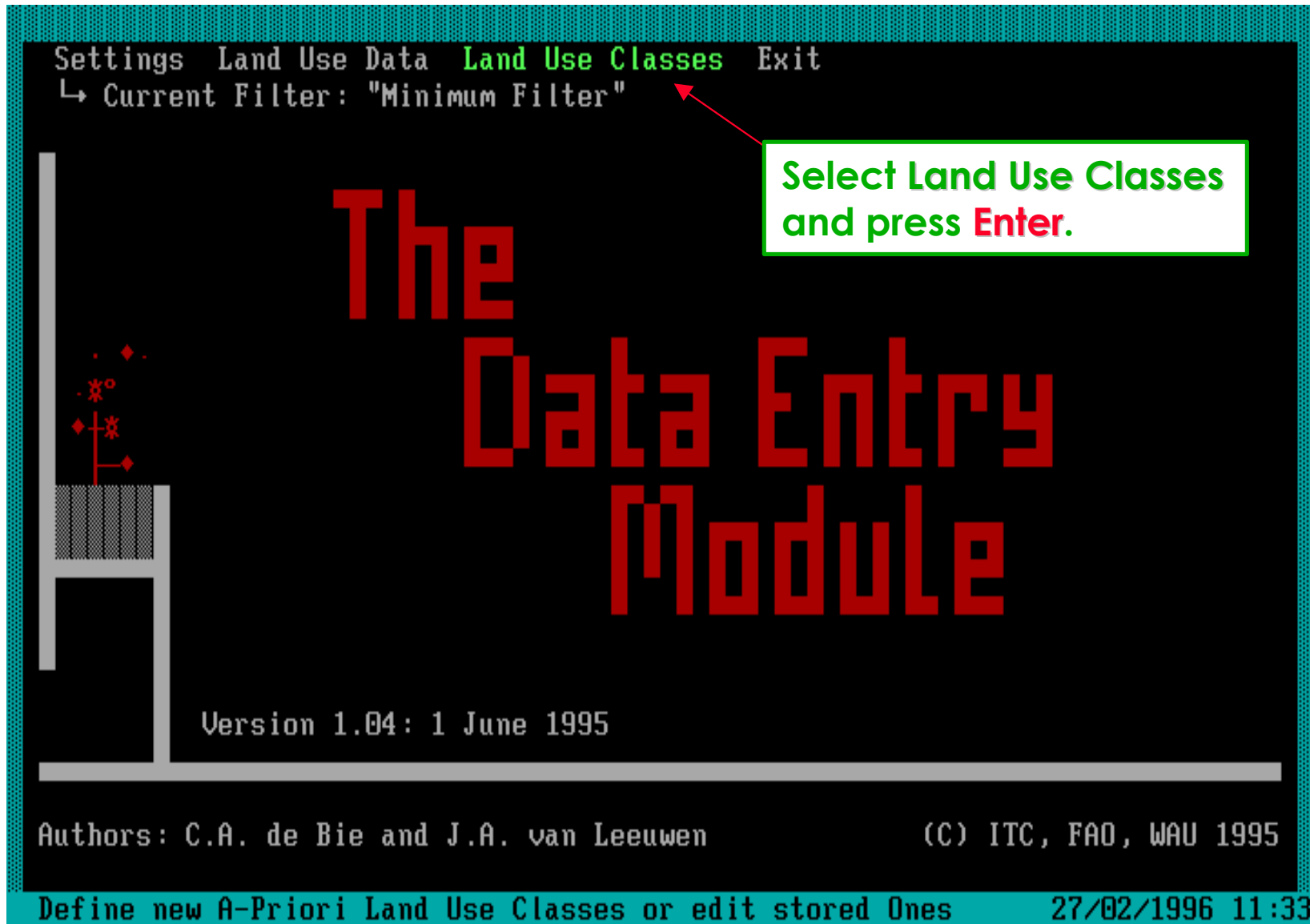
The Land Use Database

«Select a Module»

Glossary	-	Glossary; Filters; Repair; Backup/Restore
Data Entry	-	Land Use Data; Land Use Classes; Settings
Query	-	Search, Retrieve and Export stored Data
Exit <Esc>	-	Return to the Operating System

Software aspect no.-1 :

- 1 The structure of Land Use Classification Systems.**
- 2 Add a new Land Use Classification System.
- 3 Add a new Land Use Class.
- 4 Land Use Purpose Classifiers.
- 5 Operation Sequence and Context Classifiers.
- 6 Printing Land Use Classes.



Use Land Use Classes in the Main Menu to enter/edit classes.

This picklist is the entry point to edit Land Use Classes.

```
«A-Priori Land Use Classification Systems»
 5 FAO-Test
15 LREP-II/b
«2»
```

This picklist contains a list of the names of earlier specified a-priori Land Use Classification Systems. A-priori means that they are based on existing knowledge or on the survey objectives.

At lower level picklists the names of entered land use classes are listed

Many options are made available . . .

F1=Help F3=Print F4=Search F10=Edit Enter=Select Ins=Add Del=Delete

When you press **Enter** the first list of defined classes appears.

«A-Priori Land Use Classification Systems»			
«FAO-Test»		The name of the selected Land Use Classification System	
1	Single Cropping of Cereals		75 ↑
2	Sequential Double Cropping of Cereals-Cereals		3
3	Sequential Double Cropping Cereals-Vegetables		9
4	Sequential Double Cropping Cereals-Pulses		0
5	Sequential Double Cropping Cotton-Cereals		0
6	Single cropping of Cotton		4
7	Single Cropping of Pulses		17
8	Single Cropping of Vegetables or Potatoes		13
9	Sequential Cropping of Vegetables and/or Potatoes		4
10	Single Cropping of Cassava		0
11	Single Crop		1
12	Single crop		0
13	Mixed-Inter		68
14	Row-Intercr.of Cereal+Pumpkin/Melons/Pulse/Sw.Reed		31
15	Ratoon Cropping of Sugarcane (< 2 yrs)		0
16	Ratoon Cropping of Sugarcane (> 2 yrs)		1
17	Forage Production for Feed		0
18	Grazing on Unimproved Communal lands		0
19	Single cropping of Sunflower		5
20	Sequential Double Cropping Pulses-Vegetables		2 ↓
			«25» ↓

F1=Help F3=Print F4=Search F10=Edit Enter=Select Ins=Add Del=Delete

The Classification system may consist of a flat list of Land Use Classes, or . . .

```

«A-Priori Land Use Classification Systems»
  «LREP-II/b»
    «Sawah; Paddy: Rice/S.Cane/Tobacco/Veget./...»
      «Irigasi; Irrigated»
        5  2xPadi dan Lebih; 2xRice or more           0
        10 1xPadi + Palawija; 1xRice + Other Crop    0
        15 1xPadi; 1xRice                            0
      10  20 Tebu,tembakau,rosela,sayur, ...;Non-rice crops 0 »
      11
    111 test                                         0
                                                    «4»
                                                    «8»

```

The name of the selected Land Use Classification System

The names of entered land use classes

... the Classification system may consist of a hierarchy of Land Use Classes.

The classes go from general to more specific.

F1=Help F3=Print F4=Search F10=Edit Enter=Select Ins=Add Del=Delete

A large number of Classification systems can thus be specified !!

Software aspect no.-2 :

- 1 The structure of Land Use Classification Systems.
- 2 **Add a new Land Use Classification System.**
- 3 Add a new Land Use Class.
- 4 Land Use Purpose Classifiers.
- 5 Operation Sequence and Context Classifiers.
- 6 Printing Land Use Classes.

Insert is pressed at the first level to specify a new Classif. System.

The screenshot shows a terminal window with a black background and cyan text. At the top, a header reads «A-Priori Land Use Classification Systems». Below it, a list contains two items: '5 FAO-Test' and '15 LREP-II/b'. To the right of each item is a small cyan box containing a white cursor and a right-pointing arrow. At the bottom right of this list is the text «2». A yellow arrow points from the list area down to an edit screen. The edit screen has a cyan header: «Add/Edit an A-Priori Land Use Classification System». It contains two fields: 'Code : 20' and 'Name : New Classification (demo!)'. To the right of the edit screen, yellow text says 'Only 2 edit fields are available in this edit screen'. A yellow arrow points from this text up to a green-bordered box containing the text 'Press F10 to save the name of the specified classification system.' At the bottom of the terminal, red text reads 'The Name/Description of the A-Priori Land Use Classification System' and 'F1=Help F10=Save', with 'F10=Save' highlighted in yellow.

```
«A-Priori Land Use Classification Systems»
5  FAO-Test
15 LREP-II/b
«2»

«Add/Edit an A-Priori Land Use Classification System»
Code      : 20
Name      : New Classification (demo!)

The Name/Description of the A-Priori Land Use Classification System
F1=Help F10=Save
```

Item number 20
will be added

Press **F10** to save the
name of the specified
classification system.

Only 2 edit fields
are available in
this edit screen

The specified Classification System contains no classes as yet . . .

```
«A-Priori Land Use Classification Systems»
 5  FAO-Test
15  LREP-II/b
20  New Classification (demo!)
  <<  >>
```

After pressing **F10** the name of the system is indeed added . . .

Press **Enter** to go to the next level . . .

No **>>** sign is present

F1=Help F3=Print F4=Search F10=Edit Enter=Select Ins=Add Del=Delete

Software aspect no.-3 :

- 1 The structure of Land Use Classification Systems.
- 2 Add a new Land Use Classification System.
- 3 Add a new Land Use Class.**
- 4 Land Use Purpose Classifiers.
- 5 Operation Sequence and Context Classifiers.
- 6 Printing Land Use Classes.

Next all aspects to specify a Land Use Class will be shown . . .

```
«A-Priori Land Use Classification Systems»
  «New Classification (demo!)»
20 New Classification (demo!)
                                     «0»
                                     0
                                     «3»
```

Indeed an empty picklist appears

Press **Ins** to add a new Land Use Class . . .

F1=Help Ins=Add

An Edit Screen appears with many prompts

```
«A-Priori Land Use Classification Systems»
«New Classification (demo!)»
20 New Classification (demo!)
«0»
«3»

«Add/Edit an A-Priori Land Use Class»
Code :
A-Priori LU Class :
—Land Use Purpose Classifiers
- Species/Service : »
  Product/Benefit : »
- Species/Service : »
  Product/Benefit : »
- Species/Service : »
  Product/Benefit : »
- Species/Service : »
  Product/Benefit : »
—Operation Sequence Classifiers
—Context Classifiers

The unique Code of this Item
F1=Help F8=Calc F10=Save
```

The **Ins** key is pressed

Three types of classifiers are made available

In this case, the **Minimum Data Entry Filter** is selected in Settings.

«A-Priori Land Use Classification Systems»
«New Classification (demo!)»
20 New Classification (demo!)

Note:
This part of the screen
will not be shown
further in this demo

«Add/Edit an A-Priori Land Use Class»
Code :
A-Priori LU Class :
—Land Use Purpose Classifiers—
- Species/Service : »
Product/Benefit : »
- Species/Service : »
Product/Benefit : »
- Species/Service : »
Product/Benefit : »
- Species/Service : »
Product/Benefit : »
- Species/Service : »
Product/Benefit : »
—Operation Sequence Classifiers—
—Context Classifiers—

No prompts are present for these two headings !!
In the filter no classifiers were pre-selected !!

The unique Code of this Item
F1=Help F8=Calc F10=Save

Software aspect no.-4 :

- 1 The structure of Land Use Classification Systems.
- 2 Add a new Land Use Classification System.
- 3 Add a new Land Use Class.
- 4 Land Use Purpose Classifiers.**
- 5 Operation Sequence and Context Classifiers.
- 6 Printing Land Use Classes.

A Purpose is a [Species/Service - Product/Benefit] combination.

Land Use Purpose Classifiers . . .

Specify here the class number (1-240)

Specify here the name of the class

«Add/Edit an A-Priori Land Use Class»

Code	:	<input type="text"/>
A-Priori LU Class	:	<input type="text"/>
—Land Use Purpose Classifiers—		
- Species/Service	:	» <input type="text"/>
Product/Benefit	:	» <input type="text"/>
- Species/Service	:	» <input type="text"/>
Product/Benefit	:	» <input type="text"/>
- Species/Service	:	» <input type="text"/>
Product/Benefit	:	» <input type="text"/>
- Species/Service	:	» <input type="text"/>
Product/Benefit	:	» <input type="text"/>
- Species/Service	:	» <input type="text"/>
Product/Benefit	:	» <input type="text"/>
—Operation Sequence Classifiers—		
—Context Classifiers—		

Five Land Use Purposes can be specified. After saving them you may specify many more !!

The unique Code of this Item

F1=Help F8=Calc F10=Save

From the Glossary a Species/Service can be selected . . .

Land Use Purpose Classifiers . . .

```
«Add/Edit an A-Priori Land Use Class»
Code : 5
A-Priori LU Class : Demo Class
—Land Use Purpose Class: «Species/Services»
- Species/Service : » N «Plants; »
  Product/Benefit : » A Cereals; » ↑
- Species/Service : » P Root and tuber plants; »
  Product/Benefit : » R Sago + related pl's for starch; »
- Species/Service : » C Pulses; »
  Product/Benefit : » S Vegetable oils and fats; »
- Species/Service : » Edible fruits and nuts; »
  Product/Benefit : » Vegetables; »
- Species/Service : » Spices and condiments; »
  Product/Benefit : » Essential oil plants; »
—Operation Sequence Clas: Plants used for beverages/(F1); ?»
—Context Classifiers—: Plants used for chewing; » ↓
«38» J
```

Family:

F1=Help F3=Print F4=Search F6=Unspecified Enter=Select

If any Cereal will do, than do not select further and press F6 . . .

Land Use Purpose Classifiers . . .

```
«Add/Edit an A-Priori Land Use Class»
Code          : 5
A-Priori LU Class : Demo Class
—Land Use Purpose Class «Species/Services»
- Species/Service : » N «Plants; »
«Cereals; »
Grain Amaranth; Amaranthus caudatus L.      ↑
      Amaranthus hybridus L.                »
Fat Hen; Chenopodium album L.              »
      Cyanotis axillaris (L.) Sweet
Buckwheat; Fagopyrum esculentum Moench
Job's Tears; Coix lachryma-jobi L.
      Dactyloctenium aegyptium Richter
Jungle Rice; Echinochloa colonum (L.) Link  ?
Japanese/Jap.Barnyard Millet; Echinochloa frumentacea (Roxburgh) Link
Finger Millet/Rapoko; Eleusine indica (L.) Gaertner f. coracana (L.) Hook.f? ↓
«23» J

Family: Amaranthaceae
F1=Help F3=Print F4=Search F6=Unspecified Enter=Select
```

Perhaps you do not want to select a specific cereal from this picklist ?

From the Glossary a **Product/Benefit** can be selected . . .

Land Use Purpose Classifiers . . .

«Add/Edit an A-Priori Land Use Class»

```
Code : 5
A-Priori LU Class : Demo Class
—Land Use Purpose Classifiers—
- Species/Service : Plants, Cereals, » -
Product/Benefit : »
- Species/Service : »
Product/Benefit : »
- Species/Service : »
Product/Benefit : »
- Species/Service : »
Product/Benefit : »
- Species/Service : »
Product/Benefit : »
—Operation Sequence Classifiers—
—Context Classifiers—
```

Indeed a whole branch of the Glossary Tree is selected

Now you can specify the cereal **Product** aimed at by the land user

The Second Part of the Purpose Classifier to define this A-Priori Land Use Class
F1=Help F10=Save Enter=Select

Use the **F6** key as required; it is shown in the keybar when applicable.

Land Use Purpose Classifiers . . .

```
«Add/Edit an A-Priori Land Use Class»
Code          : 5
A-Priori LU Class : Demo Class
—Land Use Purpose Classifiers—
- Species/Service : P «Products/Benefits/Materials»
Product/Benefit  : » N «Plant Produce»
- Species/Service : » P U «Flowers/Fruits/Seeds»
Product/Benefit  : » A F B «Grain (Cereals)»
- Species/Service : » P U B Milled/Cleaned
Product/Benefit  : » O J F Not Milled/Cleaned
- Species/Service : » S F F Shelled
Product/Benefit  : » W S F On the Cob
- Species/Service : » M F Threshed
Product/Benefit  : » P l e G Unthreshed
—Operation Sequence Cl Liv N
—Context Classifiers— Seed

«6»
«10»
```

Again you may not want to select a specific item from this picklist.

F1=Help F3=Print F4=Search F6=Unspecified Enter=Select

Indeed, many [S/S - P/B] combinations can be specified !!

This is an example of a **Multi-Purpose** Land Use Class.

One crop may be grown for **several products**, and **simultaneously several crops** may be grown !!

«Add/Edit an A-Priori Land Use Class»

```
Code : 5
A-Priori LU Class : Demo Class
—Land Use Purpose Classifiers—
- Species/Service : Plants, Cereals, » -
  Product/Benefit : Flowers/Fruits/Seeds, Grain (Cereals), » -
- Species/Service : Plants, Cereals, » -
  Product/Benefit : Plant Produce, Vegetative parts, » -
- Species/Service : Plants, Pulses, » -
  Product/Benefit : Flowers/Fruits/Seeds, Beans (whole) (Pulses), » -
- Species/Service : »
  Product/Benefit : »
- Species/Service : »
  Product/Benefit : »
—Operation Sequence Classifiers—
—Context Classifiers—
```

Do not fill these fields when you do not require them.

The First Part of the Purpose Classifier to define this A-Priori Land Use Class
F1=Help F6=Unspecified F10=Save Enter=Select

Here is the reason why [S/S - P/B] aspects are **not** included as options when specifying a Data Entry Filter. In that filter however, you can pre-select defined **Land Use Classes**.

Land Use Purpose Classifiers . . .

«Add/Edit an A-Priori Land Use Class»

```
Code : 5
A-Priori LU Class : Demo Class
—Land Use Purpose Classifiers—
- Species/Service : Plants, Cereals, » -
  Product/Benefit : Flowers/Fruits/Seeds, Grain (Cereals), » -
- Species/Service : Plants, Cereals, » -
  Product/Benefit : Plant Produce, Vegetative parts, » -
- Species/Service : Plants, Pulses, » -
  Product/Benefit : Flowers/Fruits/Seeds, Beans (whole) (Pulses), » -
- Species/Service : »
  Product/Benefit : »
- Species/Service : »
  Product/Benefit : »
—Operation Sequence Classifiers—
—Context Classifiers—
```

These defined **Land Use Purposes** act later as a **Filter** when specifying actual information on [S/S-P/B] combinations for an actual **Land Use System** description.

As shown later, each actual **Land Use System** description **must be linked** to a pre-defined a-priori **Land Use Class**.

The First Part of the Purpose Classifier to define this A-Priori Land Use Class
F1=Help F6=Unspecified F10=Save Enter=Select

Software aspect no.-5 :

- 1 The structure of Land Use Classification Systems.
- 2 Add a new Land Use Classification System.
- 3 Add a new Land Use Class.
- 4 Land Use Purpose Classifiers.
- 5 Operation Sequence and Context Classifiers.**
- 6 Printing Land Use Classes.

In this case, the **Maximum** Data Entry Filter is selected in Settings.

Operation Sequence Classifiers . . .

«Add/Edit an A-Priori Land Use Class»

```
Product/Benefit : »
- Species/Service : »
Product/Benefit : »
- Species/Service : »
Product/Benefit : »
- Species/Service : »
Product/Benefit : »
- Operation Sequence Classifiers
- 1: Crop Production, » -
- 2: Livestock Production, » -
- 3: Extraction/Collection/Grazing, » -
- 4: Conservation, » -
- 5: Settlement and Related Uses, » -
- 6: Recreation and Tourism, » -
- 7: Labour Intensity, » -
- 8: Cultivation Factor, » -
```

Many prompts are present under this heading !!

Each prompt corresponds with an item at the first level in the classifiers Glossary Tree !!

The Operation Sequence Classifiers used to define this A-Priori Land Use Class
F1=Help F10=Save Enter=Select

Operation Sequence Classifiers . . .

```
«Add/Edit an A-Priori Land Use Class»
```

```
Product/Benefit : »  
- Species/Service : »  
Product/Benefit : »  
- Species/Service : »  
Product/Benefit : »
```

```
- Specie «Crop Production»
```

```
Product N «Yes»
```

```
—Operat Y T «Temporary (arable) Cropping»
```

```
- 1: C T S «Multiple Cropping»
```

```
- 2: Liv T M Intercropping (+) ?»
```

```
- 3: Ext P Relay Intercropping (/) ?
```

```
- 4: Con Per Sequential Cropping (-) ?»
```

```
- 5: Set Per Mix of the Others (+,/,-) ?»
```

```
- 6: Rec Cro Cropping in Nurseries -«4»
```

```
- 7: ∅ L Cropping in Nurseries ?»
```

```
- 8: ∅ C Cropping in Nurseries «8» ↓
```

Each Glossary Branch goes from general to more specific and can thus be many levels deep . . .

Again you may not want to select a specific item from this picklist; then use **F6**.

```
F1=Help F3=Print F4=Search F6=Unspecified Enter=Select
```

Each Glossary Branch (Prompt) must be mutually exclusive !!

Operation Sequence Classifiers . . .

«Add/Edit an A-Priori Land Use Class»

Product/Benefit : »
- Species/Service : »
Product/Benefit : »
- Species/Service : »
Product/Benefit : »

- Specie «Settlement and Related Uses»

Produc None
- Operat Yes

- 1:
- 2: Livestock Production, » -
- 3: Extraction/Collection/Grazing, » -
- 4: Conservation, » -
- 5: Settlement and Related Uses, None
- 6: Recreation and Tourism, » -
- 7: ∅ Labour Intensity, » -
- 8: ∅ Cultivation Factor, » -

Each Glossary Branch must start with simple options like: (Yes-No), (Done-Not Done), (Applied-Not Applied), etc.

F1=Help F3=Print F4=Search F6=Unspecified Enter=Select

The first 6 Classifiers are main classifiers (all fully independent), while the others are possible modifiers (also independent).

The Context Classifiers behave identical to the Operation Sequence Classifiers. Use of them is **not recommended !!**

Context Classifiers . . .

«Add/Edit an A-Priori Land Use Class»

- 15: Irrigation Structures, » -
- 16: Water Applied, » -
- 17: Quality of Water Applied, » -
- 18: Chemical Fertilizers Applied, » -
- 19: Organic Manures Applied, » -
- 20: Herbicides Applied, » -
- 21: Mulch Applied, » -

—Context Classifiers—

- 1: Tenancy Arrangement, » -
- 2: **Market Orientation, » -**
- 3: Capital Intensity, » -
- 4: Infrastructure Requirements, » -
- 5: Goals of Holder, » -
- 6: Attitude of Holder, » -
- 7: Technical Knowledge of Holder, » -
- 8: Input Availability, » -

When a classifier (modifier) is not present in this list, then add it if necessary in the Glossary and make selection possible in your Data Entry Filter.

The Context Classifiers used to define this A-Priori Land Use Class

F1=Help F10=Save Enter=Select

Of the Context Classifiers only **one** is specified and of the shown Operation Sequence Classifiers **none** is specified.

Context Classifiers . . .

«Add/Edit an A-Priori Land Use Class»

- 15: Irrigation Structures, » -
- 16: Water Applied, » -
- 17: Quality of Water Applied, » -
- 18: Chemical Fertilizers Applied, » -
- 19: Organic Manures Applied, » -
- 20: Herbicides Applied, » -
- 21: Mulch Applied, » -

—Context Classifiers—

- 1: Tenancy Arrangement, » -
- 2: **Market Orientation, Subsistence**
- 3: Capital Intensity, » -
- 4: Infrastructure Requirements, » -
- 5: Goals of Holder, » -
- 6: Attitude of Holder, » -
- 7: Technical Knowledge of Holder, » -
- 8: Input Availability, » -

Just specify the classifier that you require.

Do not be tempted to define all listed classifiers !!

When a class is properly defined, press **F10** to save it.

The Context Classifiers used to define this A-Priori Land Use Class

F1=Help F10=Save Enter=Select

More on software aspect no.-3 :

- 1 The structure of Land Use Classification Systems.
- 2 Add a new Land Use Classification System.
- 3 Add a new Land Use Class.**
- 4 Land Use Purpose Classifiers.
- 5 Operation Sequence and Context Classifiers.
- 6 Printing Land Use Classes.

The defined Land Use Class is now included in the Picklist.

```
«A-Priori Land Use Classification Systems»  
  «New Classification (demo!)»  
    5 Demo Class
```

Press **F10** to edit the defined class.

Press **Ins** to add another class at this level.

Press **Enter** to define sub-classes for this land use class.

F1=Help F3=Print F4=Search F10=Edit Enter=Select Ins=Add Del=Delete

Shown is the Edit Screen to specify a **sub-class** for the earlier defined Land Use Class called **Demo Class** .

«A-Priori Land Use Classification Systems»
 «New Classification (demo!)»
 «Demo Class»

Demo Class was selected, Enter was pressed, and then Ins was pressed.

«Add/Edit an A-Priori Land Use Class»

Code : []
A-Priori LU Class : []
—Land Use Purpose Class : «Species/Services»
- Species/Service : » P «Plants; »
 Product/Benefit : » Cereals;
- Species/Service : » Pulses;
 Product/Benefit : »
- Species/Service : »
 Product/Benefit : »
- Species/Service : »
 Product/Benefit : »
- Species/Service : »
 Product/Benefit : »
—Operation Sequence Classifiers—
- 1: Production, Yes, Temporary (arable) Cropping
- 2: Settlement and Related Uses, None

Only the Species as selected for Demo Class are now available for selection or further class specifications. Other classifiers are automatically copied because they must remain valid !!

Family:
F1=Help F3=Print F4=Search F6=Unspecified Enter=Select

It is important to understand the **link** between a class and its sub-classes. The software **checks** the data integrity !!

```
«A-Priori Land Use Classification Systems»
  «New Classification (demo!)»
    «Demo Class»
      «0»
      «3»
«Add/Edit an A-Priori Land Use Class»
Code : 0
A-Priori LU Class :
—Land Use Purpose Classifiers—
- Species/Service : P «Products/Benefits/Materials»
  Product/Benefit : » P «Plant Produce»
- Species/Service : » Vegetative parts
  Product/Benefit : » Flowers/Fruits/Seeds
- Species/Service : »
  Product/Benefit : »
- Species/Service : »
  Product/Benefit : »
- Species/Service : »
  Product/Benefit : »
—Operation Sequence Classifiers—
- 1: Production, Yes, Temporary (arable) Cropping
- 2: Settlement and Related Uses, None
```

Also the earlier defined **Products** for Demo Class are now available for selection or further class specifications.

Further specification of used classifiers or use of other not-used ones is always possible !!

F1=Help F3=Print F4=Search F6=Unspecified Enter=Select

This is the last information on how to specify a Land Use Class.

```
«A-Priori Land Use Classification Systems»
  «New Classification (demo!)»
    «Demo Class»
      Product/Benefit : »
      - Species/Service : »
      Product/Benefit : »
      - Species/Service : »
      Product/Benefit : »
      - Species/Service : »
      Product/Benefit : »
      - Operation Sequence Classifiers
      - 1: Production, Yes, Temporary (arable) Cropping, Multiple Cropping, » -
      - 2: Settlement and Related Uses, None
      - 3: Livestock Production, » -
      - 4: Extraction/Collection/Grazing, » -
      - 5: Conservation, » -
      - 6: Recreation and Tourism, » -
      - 7: Labour Intensity, » -
      - 8: Cultivation Factor, » -
```

Earlier specified Operation Sequence Classifiers as specified in Demo Class are always listed first in the list of classifiers prompts.

When a class is properly defined, press F10 to save it.

The Operation Sequence Classifiers used to define this A-Priori Land Use Class
F1=Help F10=Save Enter=Select

Software aspect no.-6 :

- 1 The structure of Land Use Classification Systems.
- 2 Add a new Land Use Classification System.
- 3 Add a new Land Use Class.
- 4 Land Use Purpose Classifiers.
- 5 Operation Sequence and Context Classifiers.
- 6 Printing Land Use Classes.**

Demo Sub-Class is now also present in the Picklist.

```
«A-Priori Land Use Classification Systems»  
  «New Classification (demo!)»  
    «Demo Class»  
      5 Demo Sub-Class  
    «1»
```

Press F3 to print a specified class.

F1=Help F3=Print F4=Search F10=Edit Enter=Select Ins=Add Del=Delete

Make your selection of which classes should be printed . . .

```
«A-Priori Land Use Classification Systems»
  5  FAO-Test
 15  LREP-II/b
 20  New Classification (demo!)
«3»
```

One single class, all classes within a single Picklist, or all classes of a branch of a hierarchical tree can be printed as required.

```
«Print A-Priori Land Use Class»
Highlighted Item without related Information at lower Levels
All Items without related Information at lower Levels
Highlighted Item and related Information at lower Levels
All Items with related Information at lower Levels
«4»
```

F1=Help

Make your selection of which info by class should be printed . . .

The screenshot shows a terminal window with a dark background and light-colored text. At the top, a title bar reads «A-Priori Land Use Classification Systems». Below it, a list of three items is displayed: 5 FAO-Test, 15 LREP-II/b, and 20 New Classification (demo!). To the right of each item is a small square icon followed by a right-pointing arrow. At the bottom right of the list area, there is a «3» symbol. Below the list, a dialog box titled «Names Only?» is shown, with two options: Yes and No. The No option is highlighted in green. At the bottom right of the dialog box, there is a «2» symbol. At the bottom left of the terminal window, the text F1=Help is visible. A green-bordered text box with a white background is positioned to the right of the dialog box, containing the text: Print only the class names (plus the hierarchy how the classes are organised), or print the classes with their full specifications. Two red arrows point from the corners of this text box to the Yes and No options in the dialog box.

```
«A-Priori Land Use Classification Systems»
 5 FAO-Test
15 LREP-II/b
20 New Classification (demo!)
«3»

«Names Only?»
Yes
No
«2»

F1=Help
```

Print only the class names (plus the hierarchy how the classes are organised), or print the classes with their full specifications.

This is an example print of a specified Land Use Class.

A-PRIORI LAND USE CLASSES

Date: 27/02/1996 Time: 11:59:25

====Code: 20: New Classification (demo!)=====

Code : 5

A-Priori LU Class : Demo Class

—Land Use Purpose Classifiers—

- Species/Service : Plants, Cereals, » -

Product/Benefit : Plant Produce, Vegetative parts, » -

- Species/Service : Plants, Cereals, » -

Product/Benefit : Plant Produce, Flowers/Fruits/Seeds, Grain (Cereals), »

-

- Species/Service : Plants, Pulses, » -

Product/Benefit : Plant Produce, Flowers/Fruits/Seeds, Beans (whole) (Pulses), » -

—Operation Sequence Classifiers—

- 1 : Crop Production, Yes, Temporary (arable) Cropping, Multiple Cropping, » -

- 2 : Settlement and Related Uses, None

—Context Classifiers—

- 1 : Market Orientation, Subsistence

Only the data that were specified and were requested are included in prints.

F1=Help Esc=Exit

This is the end of the demo on Land Use Classes . . .

Settings Land Use Data **Land Use Classes** Exit

↳ Current Filter: "Minimum Filter"

The Data Entry Module

All aspects of this item are now fully demonstrated.

Version 1.04: 1 June 1995

Authors: C.A. de Bie and J.A. van Leeuwen (C) ITC, FAO, WAU 1995

Define new A-Priori Land Use Classes or edit stored Ones 27/02/1996 11:33



The Land Use Database

End of Demo-4 Thank YOU

