



# POND AT JAIN TEMPLE PREMISES, MOODBIDRI

Energy and Wetland Research Group, Centre for Ecological Sciences,  
 Indian Institute of Science, Bangalore; URL: <http://wgbis.ces.iisc.ernet.in/energy/>  
 In Association with Alva's Education Foundation, Moodbidri



## STAGE 1 (MAY 2016): PLANNING AND DISCUSSION



## STAGE 2 (JULY 2016): IMPLEMENTATION

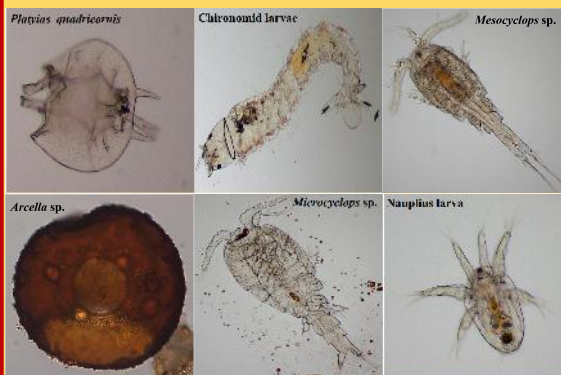


## STAGE 3 (AUGUST 2016): MONITORING

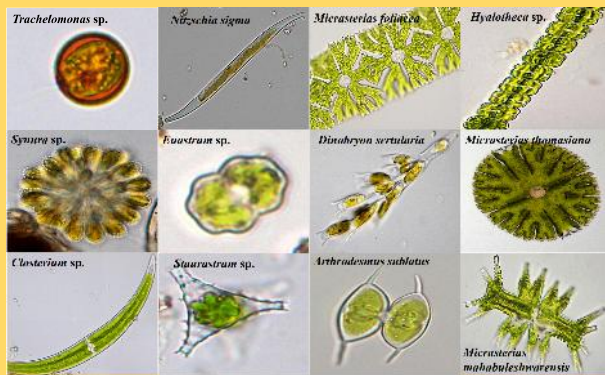


WATER QUALITY			
	Site1	Site2	Site3
pH	7.18	7.02	7.2
Electrical Conductivity (µS)	32	33	33
Total Dissolved Solids (mg/l)	16	16	16
Dissolved Oxygen (mg/l)	8.23	8.06	8.06
Turbidity (NTU)	16.07	14.4	21.17
Alkalinity (mg/l)	30	30	34
Sodium (mg/l)	7.4	6.6	6.7
Potassium (mg/l)	0.7	0.7	0.7
Phosphate (mg/l)	0.5	0.55	0.68
Nitrate (mg/l)	0.03	0.03	0.04
COD (mg/l)	4	4	6
BOD (mg/l)	2.52	2.6	3.42
Total Hardness (mg/l)	14	16	14
Calcium Hardness (mg/l)	6	7	8
Chlorides (mg/l)	21.3	24.85	23.43

## ZOOPLANKTON DIVERSITY



## ALGAL DIVERSITY



**ALVA'S**  
 EDUCATION FOUNDATION (R.) MOODUBIDRI.  
 Moulding a better tomorrow



Ramachandra T.V., Sudarshan P., Asulabha K.S., Sincy V., Vinay S.,  
 Akhil C.A. and M.D. Subash Chandran  
 Energy and Wetland Research Group, Centre for Ecological Sciences,  
 Indian Institute of Science, Bangalore 560012  
 Email: [cestvr@ces.iisc.ernet.in](mailto:cestvr@ces.iisc.ernet.in), Phone: 083 22933099  
 Web: <http://ces.iisc.ernet.in/energy>, <http://ces.iisc.ernet.in/biodiversity>