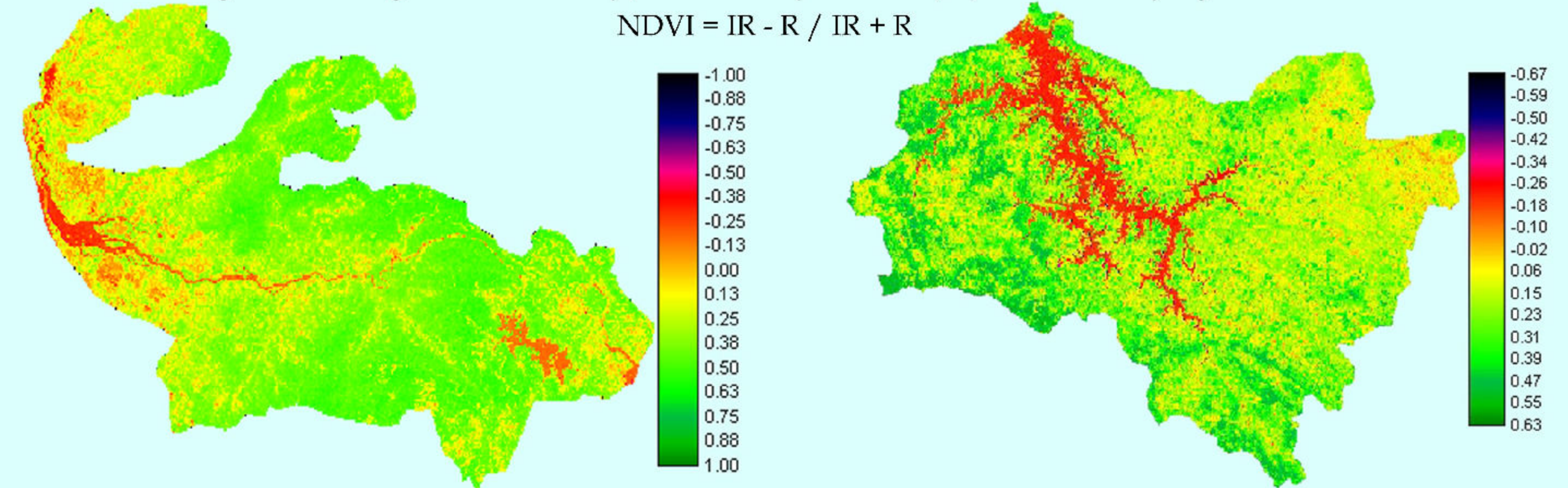
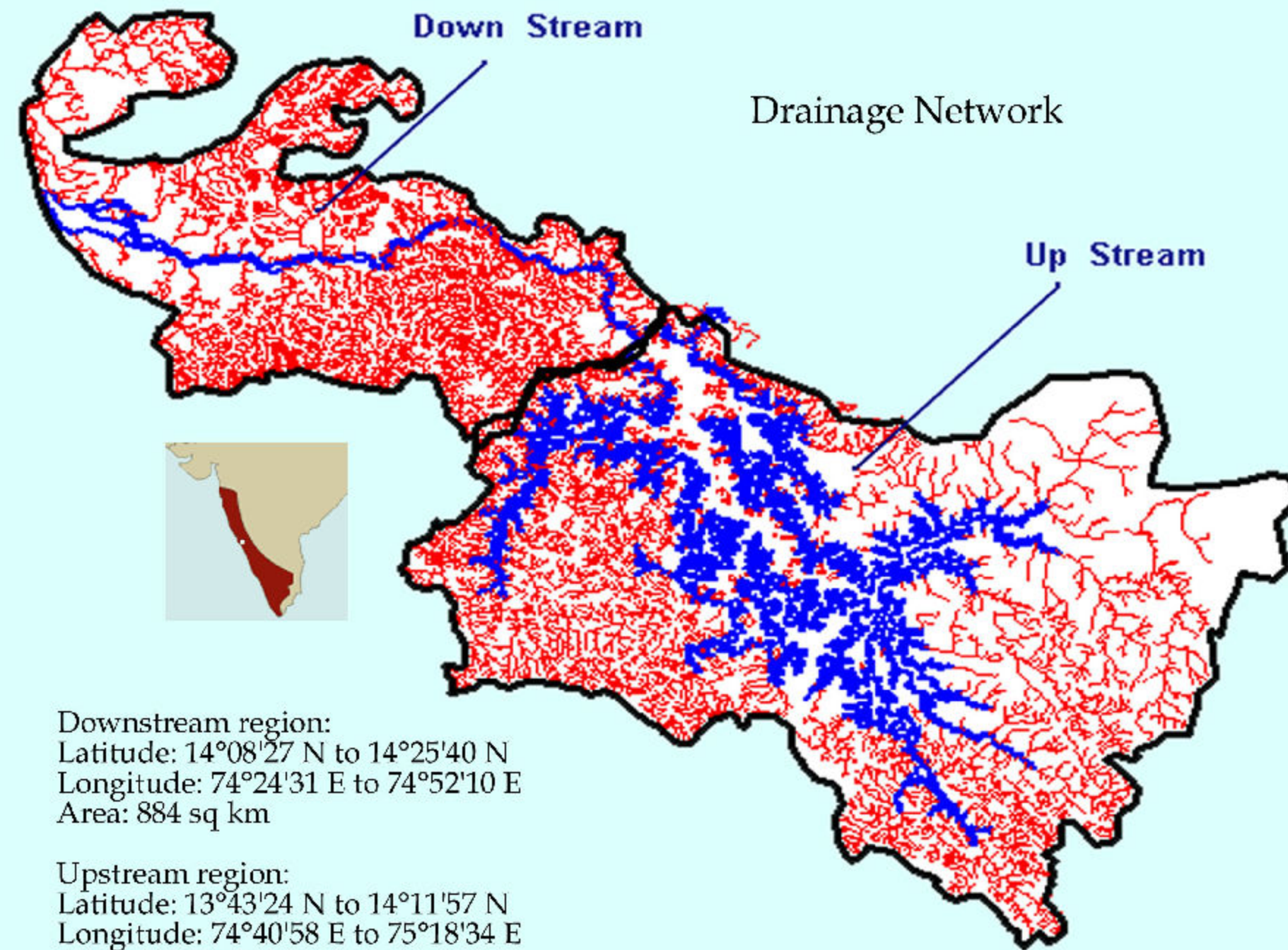


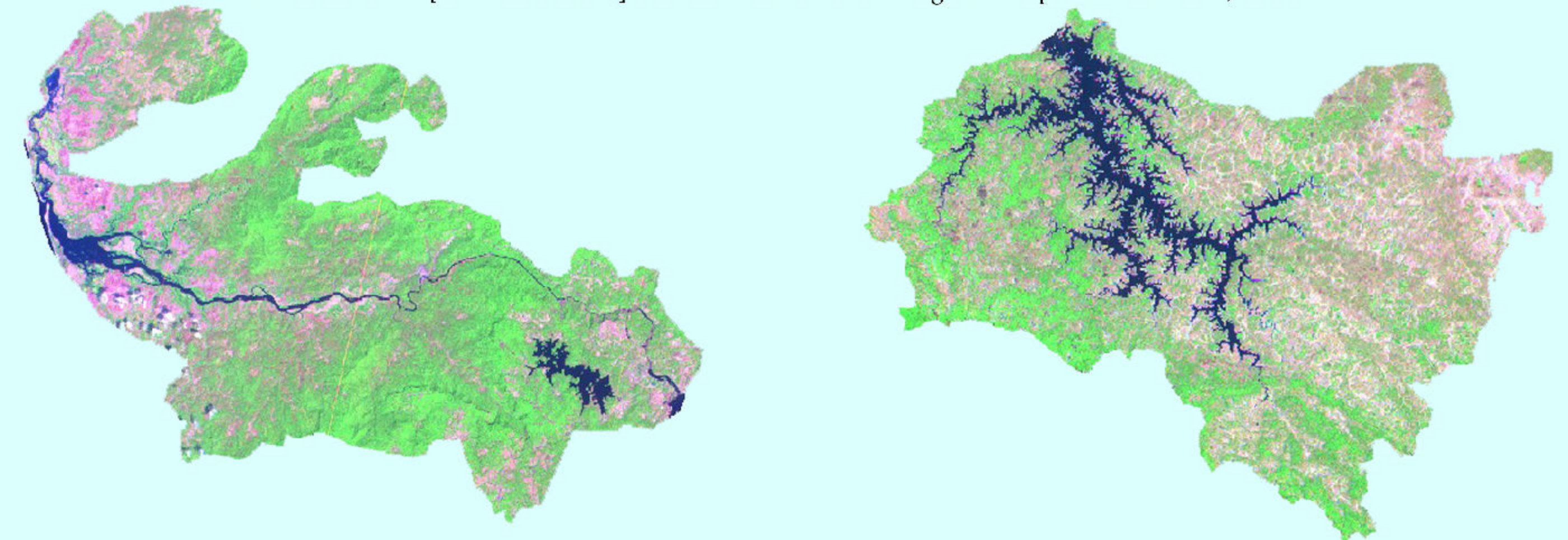
# CUMULATIVE IMPACT ASSESSMENT SHARAVATHI RIVER BASIN - WESTERN GHATS

The Normalized Difference Vegetation Index was used to delineate vegetative from non-vegetative features. High values in a vegetation index identify pixels covered by substantial proportions of healthy vegetation.

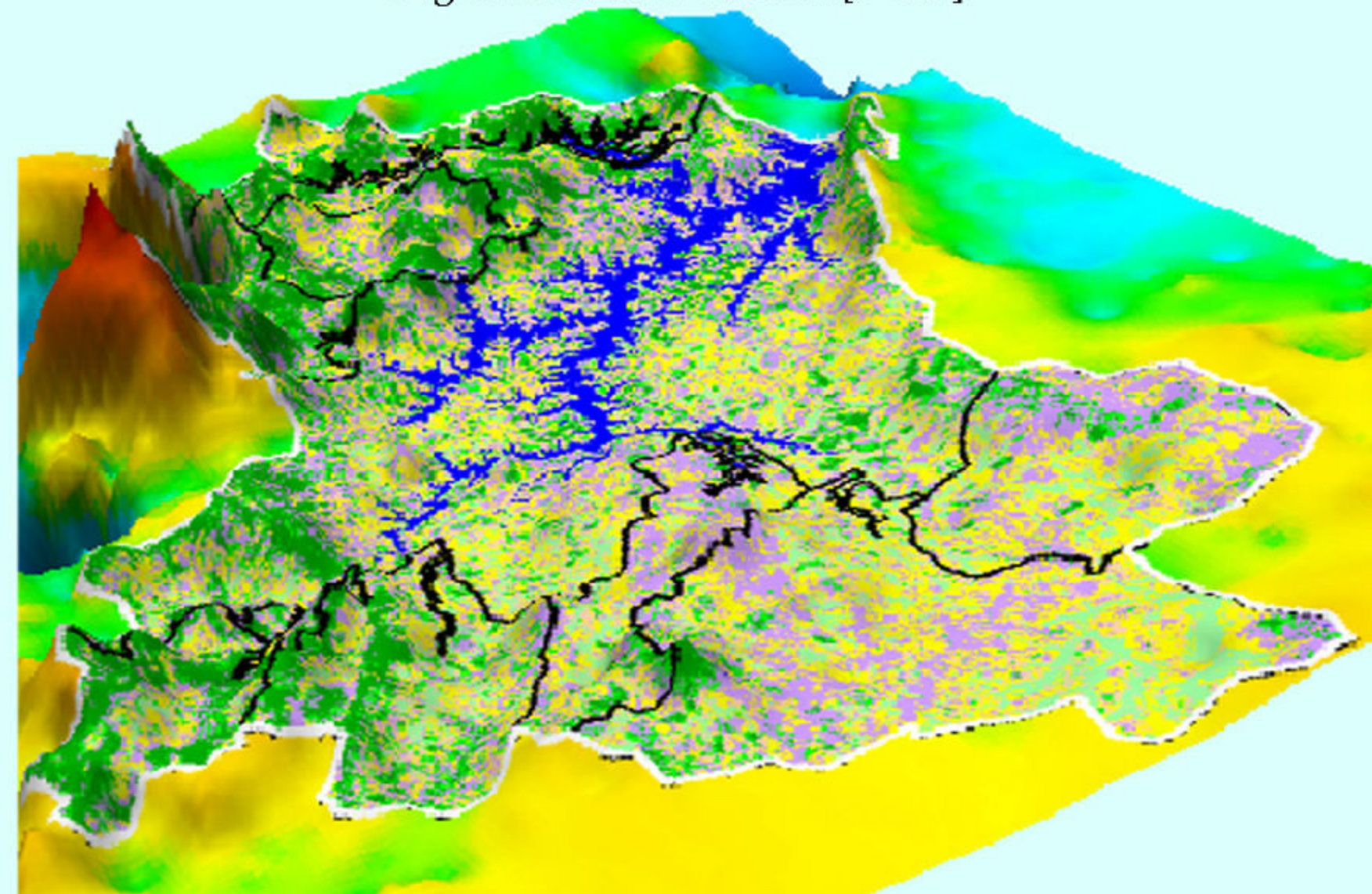
$$NDVI = \frac{IR - R}{IR + R}$$



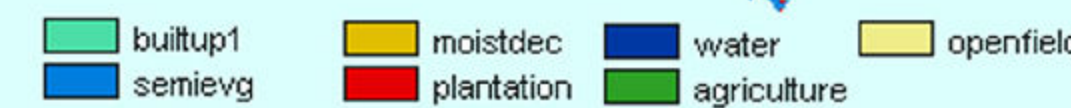
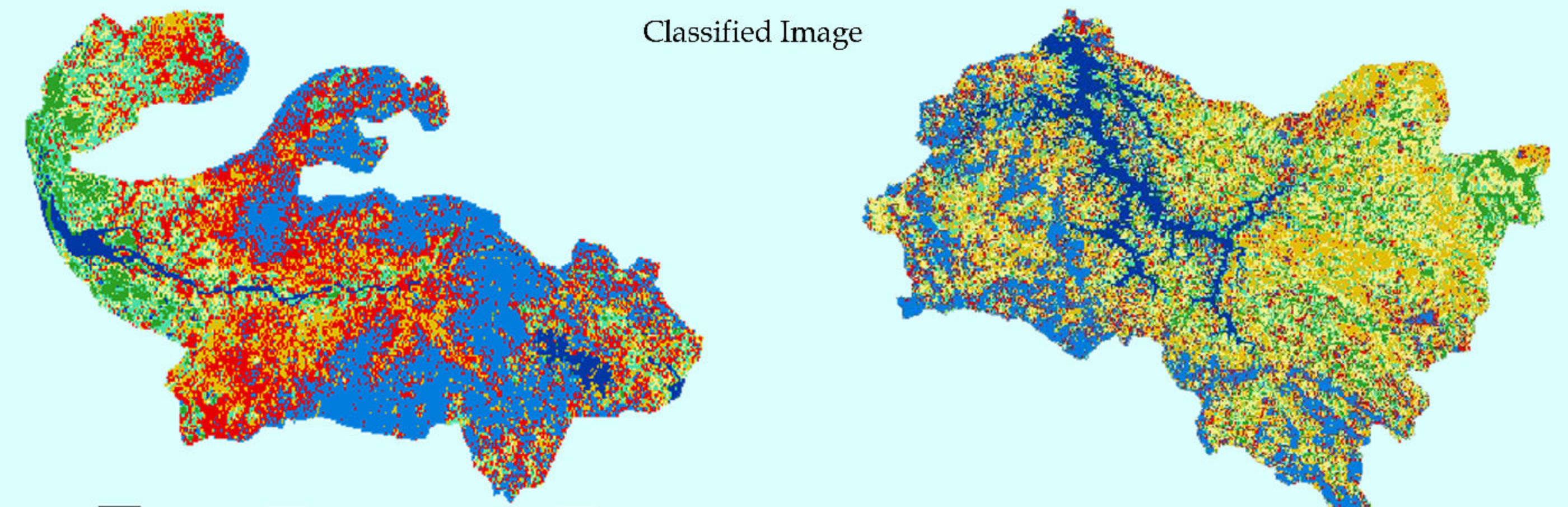
A composite image was generated by merging 3 bands [0.52 - 0.59mm (green), 0.62 - 0.68mm (red) and 0.77 - 0.86mm (near-infrared)] of LISS III sensor [23.5 m resolution] on the IRS - 1C satellite. Image was acquired on March 5, 1999.



Land cover patterns of the upstream region draped over the Digital Elevation Model [DEM]



Classified Image



*The Team*  
Dr. Ramachandra J V, Dr. Joshi N V, Dr. Subhashchandran M D, Ajay Narendra, Desai S R, Divakar K Mista, Lakshminarayana A, Mahesh D Babu, Pallav Julka, Parthaj Kumar Mohanta, Rajivkumar R, Rao G R, Raushan Kumar, Sameer A H, Sanil Kumar, Sanjeev Nayaka, Sreekanth, Subramanian K A, Subhash Babu, Sudhira A S, Suresh S and Vishnu D Mukti.  
Energy and Welland Research Group, Centre for Ecological Sciences, Indian Institute of Science, Bangalore.  
<http://ces.isc.ernet.in/energy/Welcome.html>. E-mail: energy@ces.isc.ernet.in

Acknowledgements:  
Indian Institute of Science  
Ministry of Environment and Forests, Government of India  
Centre for Scientific and Industrial Consultancy, IISc  
Karnataka Power Corporation, Bangalore