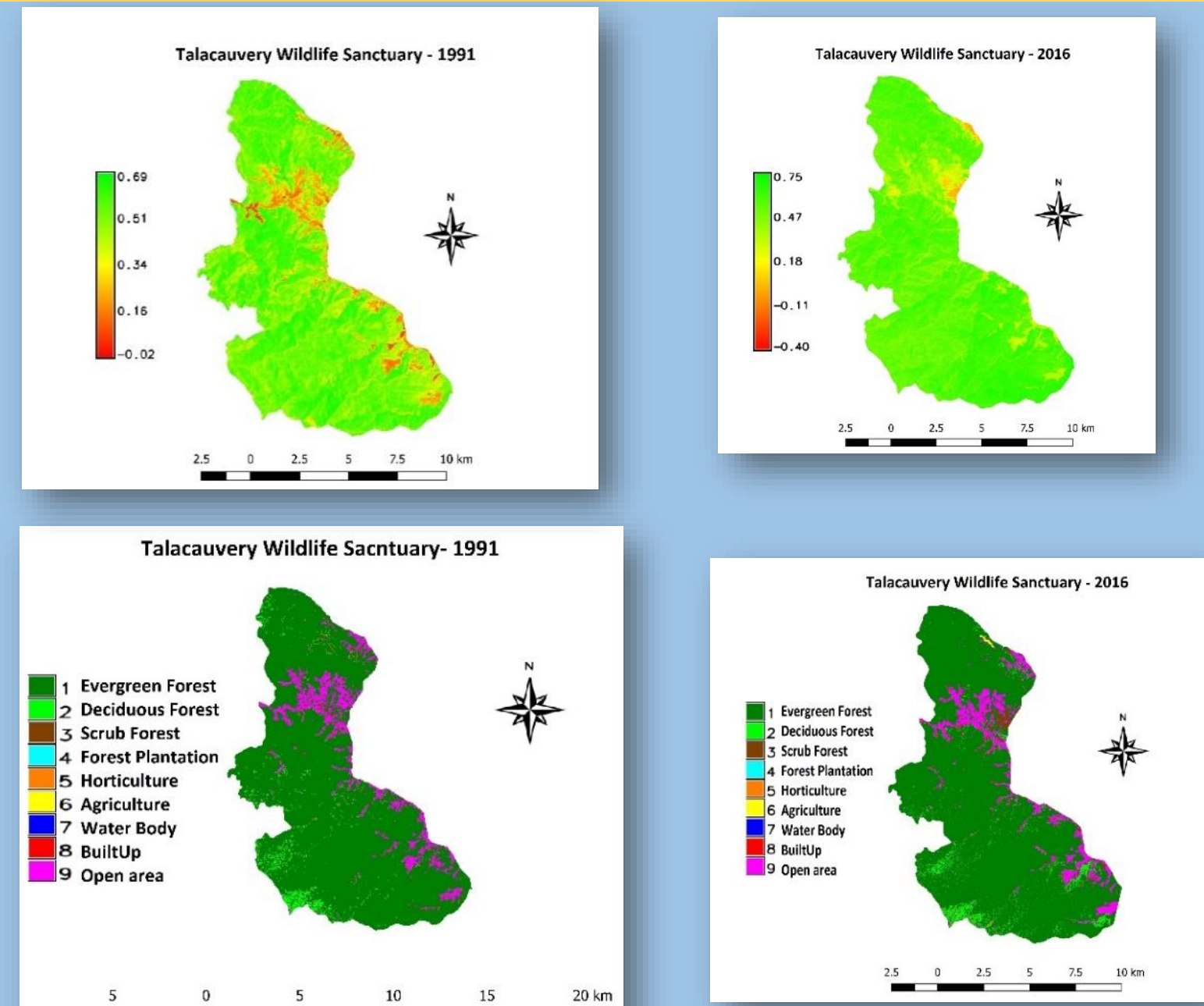


# Landscape Dynamics in Protected Areas

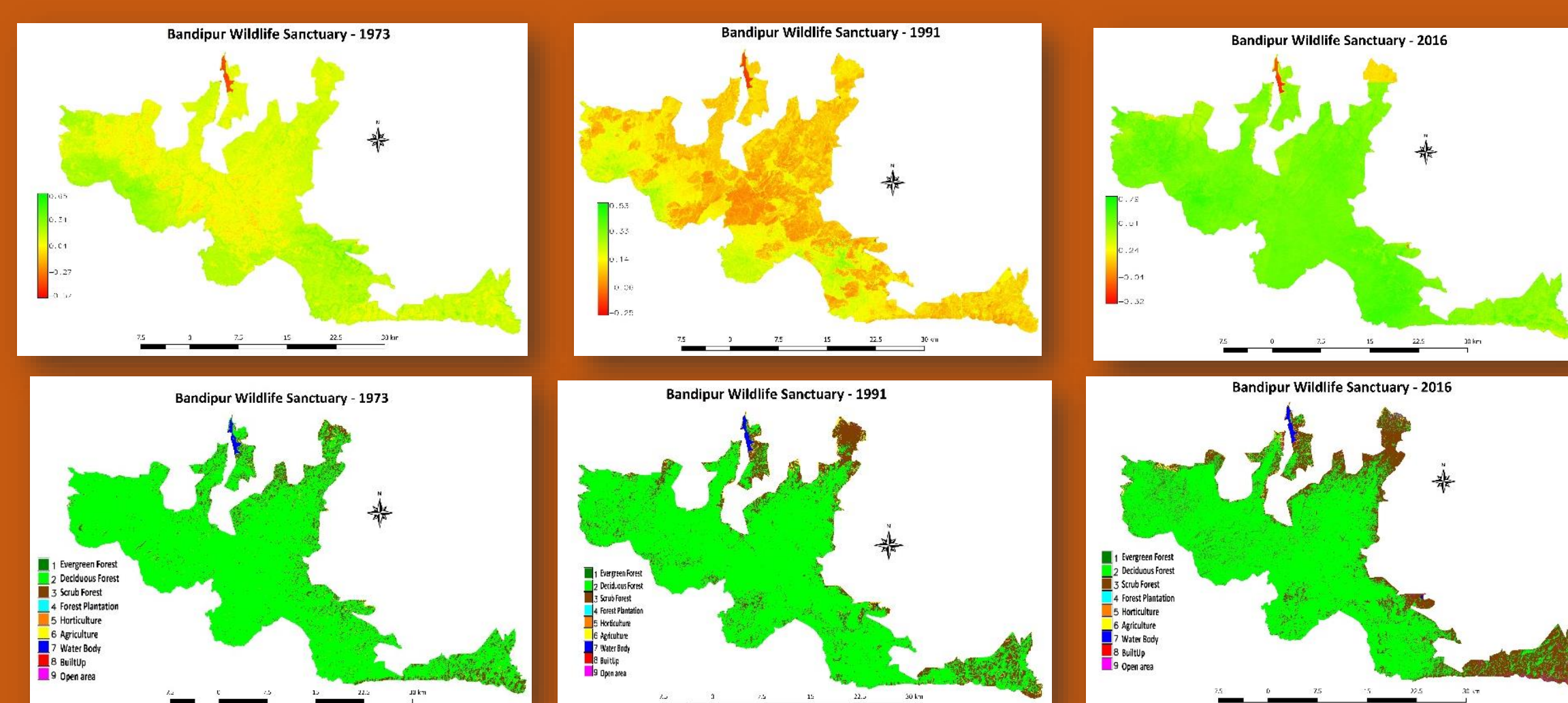
Energy and Wetland Research Group, Centre for Ecological Sciences,  
Indian Institute of Science, Bangalore  
URL: <http://wgbis.ces.iisc.ernet.in/energy/>



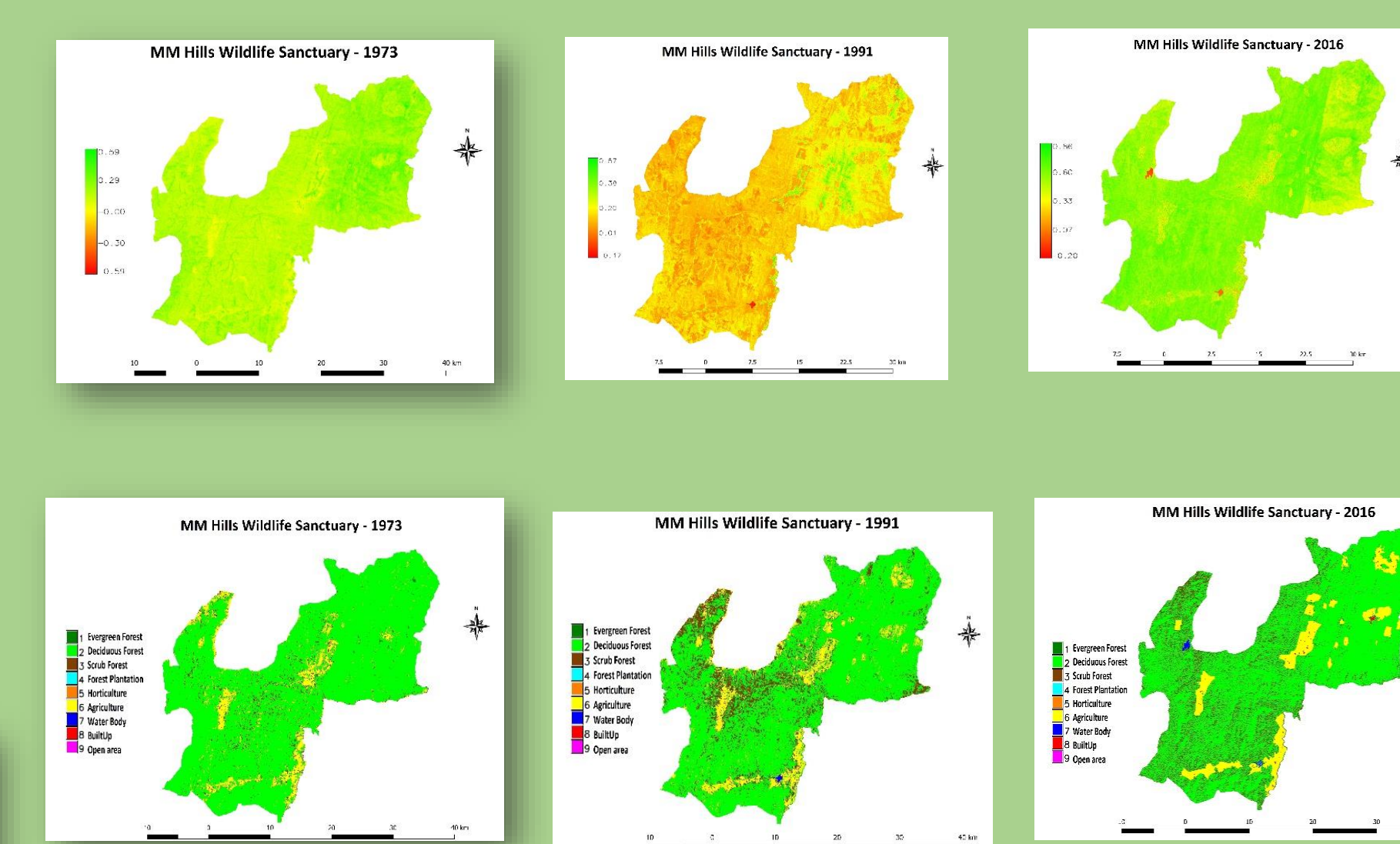
## A) TALACAUVERY WILDLIFE SANCTUARY



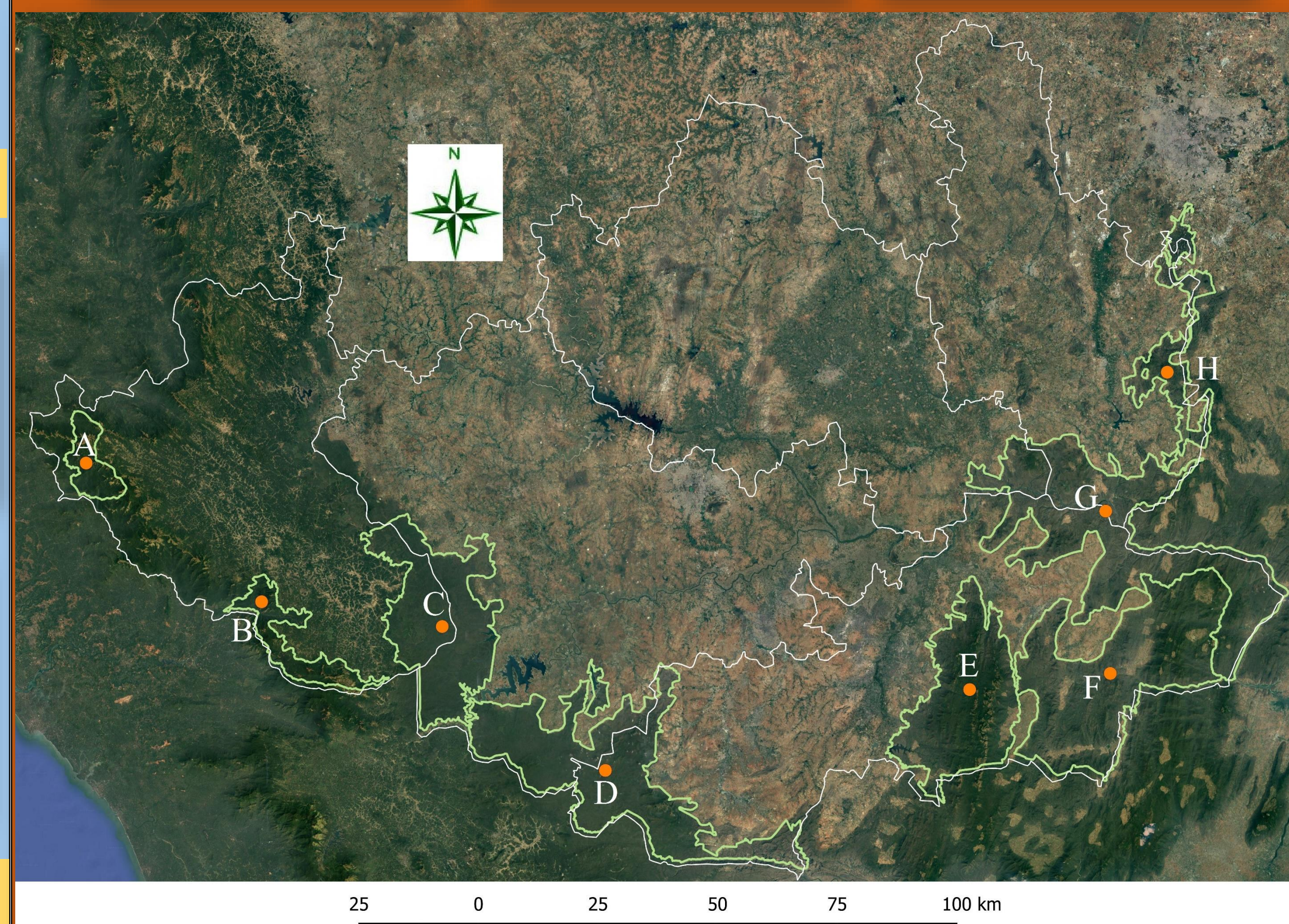
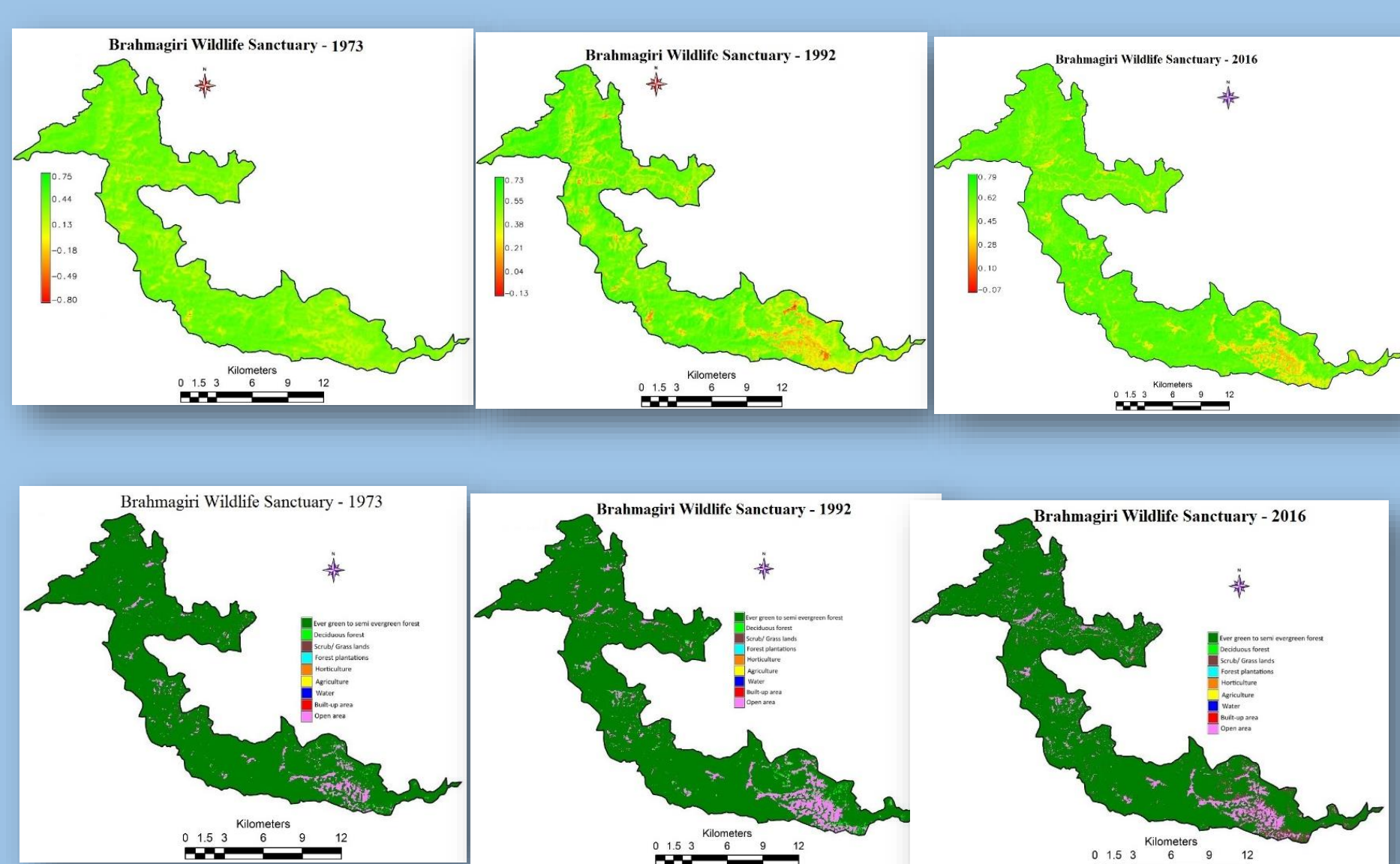
## D) BANDIPUR NATIONAL PARK



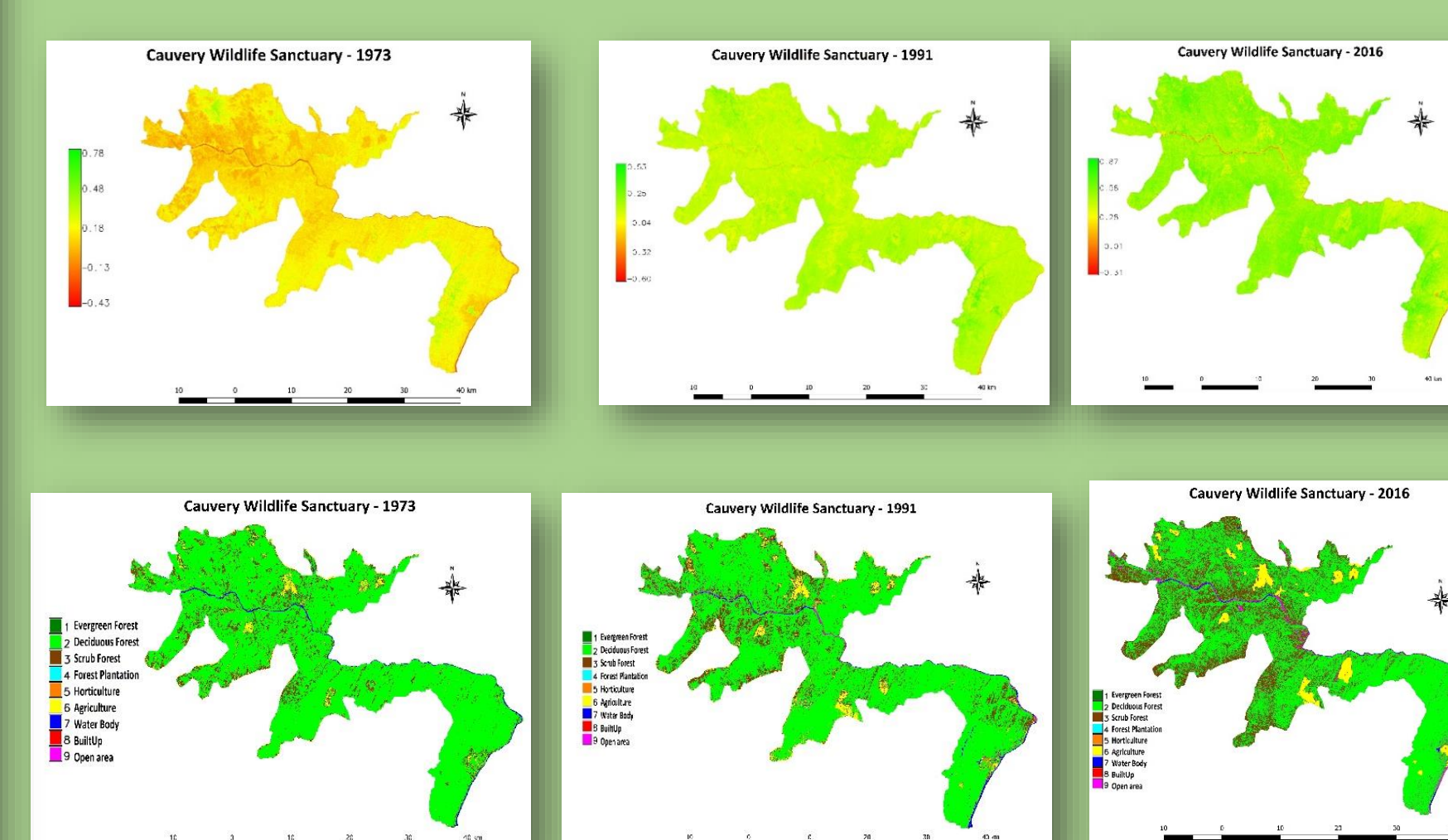
## F) MM HILLS WILDLIFE SANCTUARY



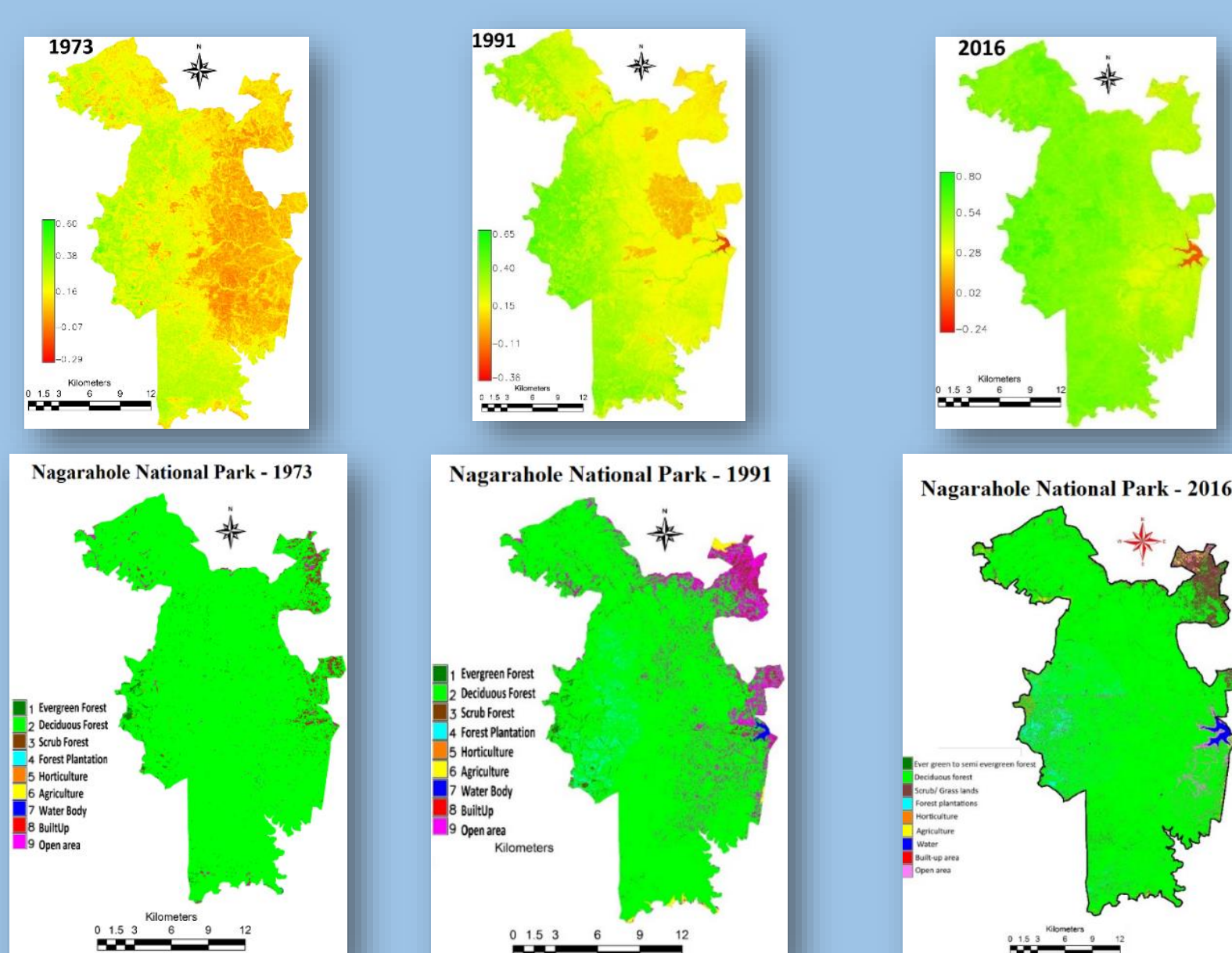
## B) BRAHMAGIRI WILDLIFE SANCTUARY



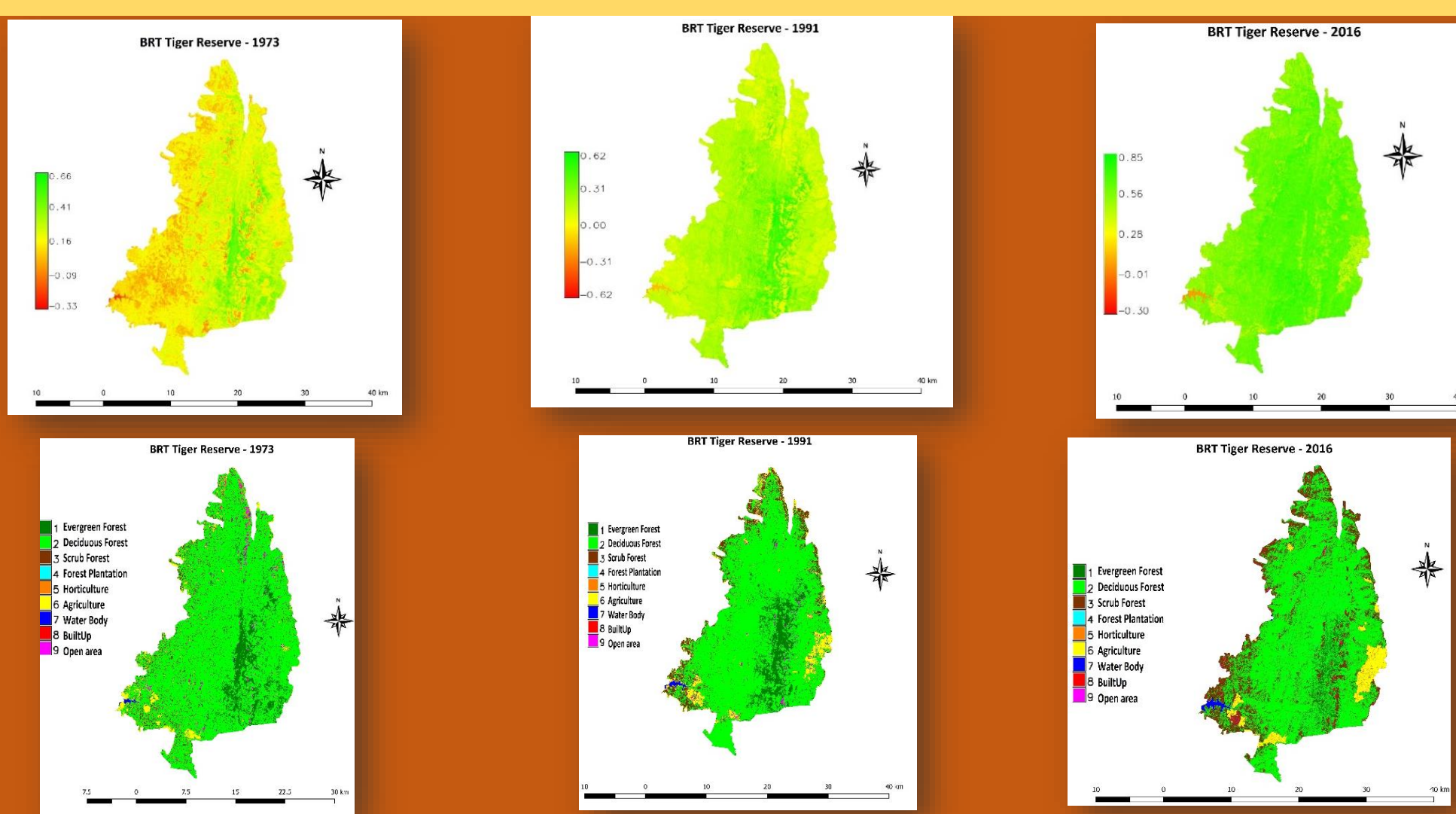
## G) CAUVERY WILDLIFE SANCTUARY



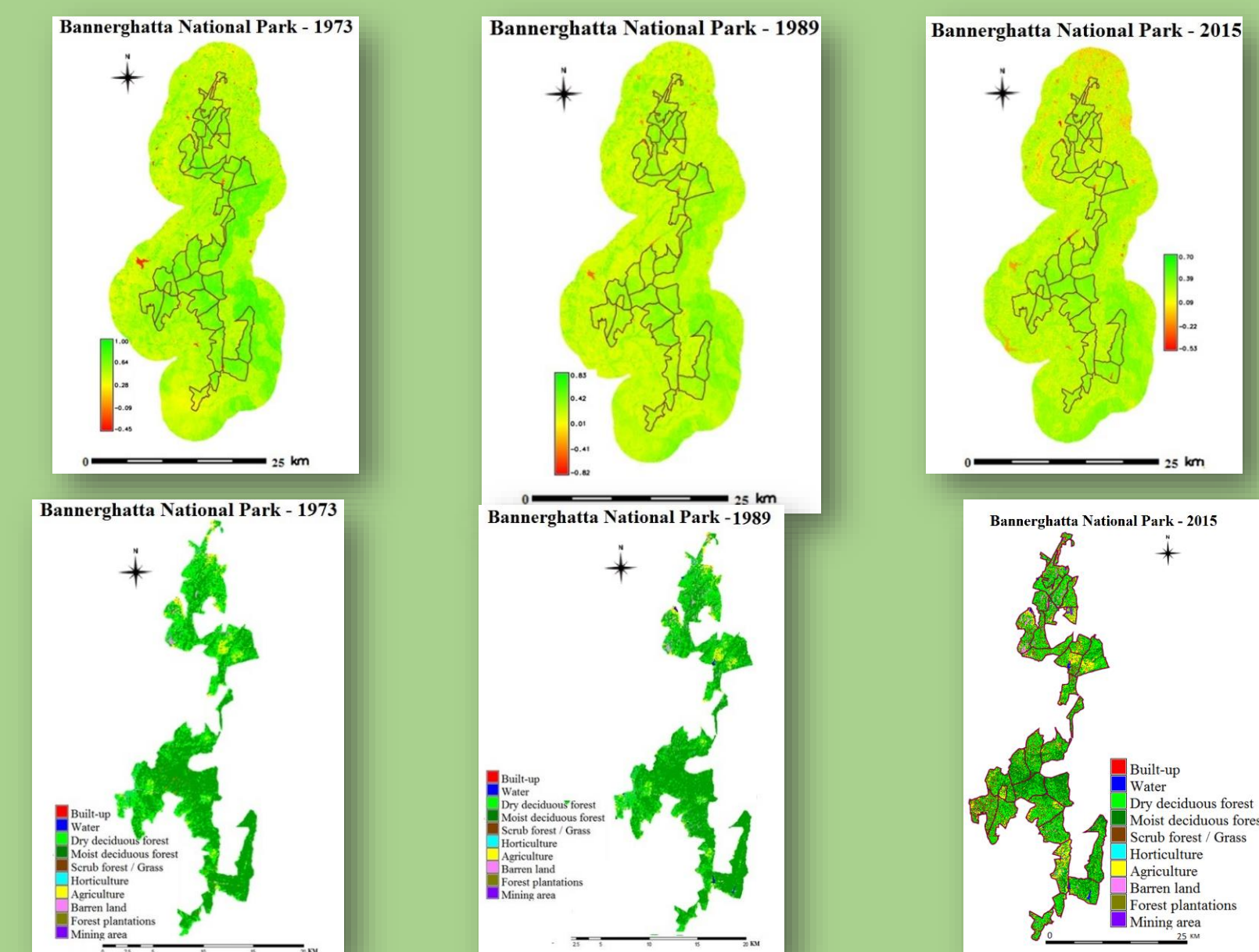
## C) NAGARAHOLE NATIONAL PARK



## E) BRT TIGER RESERVE



## H) BANNERGHATTA NATIONAL PARK



S. No.	Protected Area	Land Cover (% Vegetation)			% Difference in Land Cover	Land Use (% Forest)			% Difference in Land Use	Encroachment (Ha)
		Year				Year				
		1973	1991	2016		1973	1991	2016		
A	Talacauvery Wildlife Sanctuary	-	93.65	94.1	+0.45	-	D: 0	D: 0	D: 0	18.48
B	Brahmagiri Wildlife Sanctuary	95.55	93.03	92.61	-2.94	D: 8.54 E: 47.90	D: 7.95 E: 40.78	D: 6.49 E: 39.19	D: -2.05 E: -8.71	29.16
C	Nagarahole National Park	90.23	86.20	84.46	-5.77	D: 96.06 E: 0.88	D: 85.20 E: 0.69	D: 85.99 E: 0.46	D: -10.07 E: -0.42	458.01
D	Bandipur National Park	92.10	88.21	85.09	-7.01	D: 90.04 E: 0.20	D: 84.15 E: 0.37	D: 74.85 E: 0.02	D: -15.19 E: -0.18	852.45
E	BRT Tiger Reserve	94.55	92.93	92.88	-1.67	D: 74.79 E: 11.50	D: 72.36 E: 10.68	D: 65.27 E: 4.33	D: -9.52 E: -7.17	3277.27
F	MM Hills Wildlife Sanctuary	93.08	86.60	84.50	-8.58	D: 88.58 E: 0.21	D: 76.87 E: 0.18	D: 76.75 E: 0.17	D: -11.83 E: -0.04	3175.28
G	Cauvery Wildlife Sanctuary	93.50	88.48	85.11	-8.39	D: 85.73 E: 0	D: 80.13 E: 0	D: 67.43 E: 0	D: -18.30 E: 0	3509.18
H	Bannerghatta National Park	87.98	1989: 85.50	2015: 73.46	-14.52	D: 84.80 E: 0	D: 82.10 E: 0	D: 69.90 E: 0	D: -14.90 E: 0	-

### RECOMMENDATIONS

- Forest fragmentation is the root cause for human-animal conflicts.
- Forest decline has led to fodder and water scarcity.
- Forest landscape to be enriched with native species of vegetation, fruits, fodder, etc.
- Forest management including all stake holders.



**Nimish Gupta, Bharath Seturu, Ramachandra T.V.**  
Energy and Wetland Research Group, Centre for Ecological Sciences,  
Indian Institute of Science, Bangalore 560012  
Email: [cestvr@ces.iisc.ernet.in](mailto:cestvr@ces.iisc.ernet.in), Phone: 080 22933099  
Web: <http://ces.iisc.ernet.in/energy>, <http://ces.iisc.ernet.in/biodiversity>