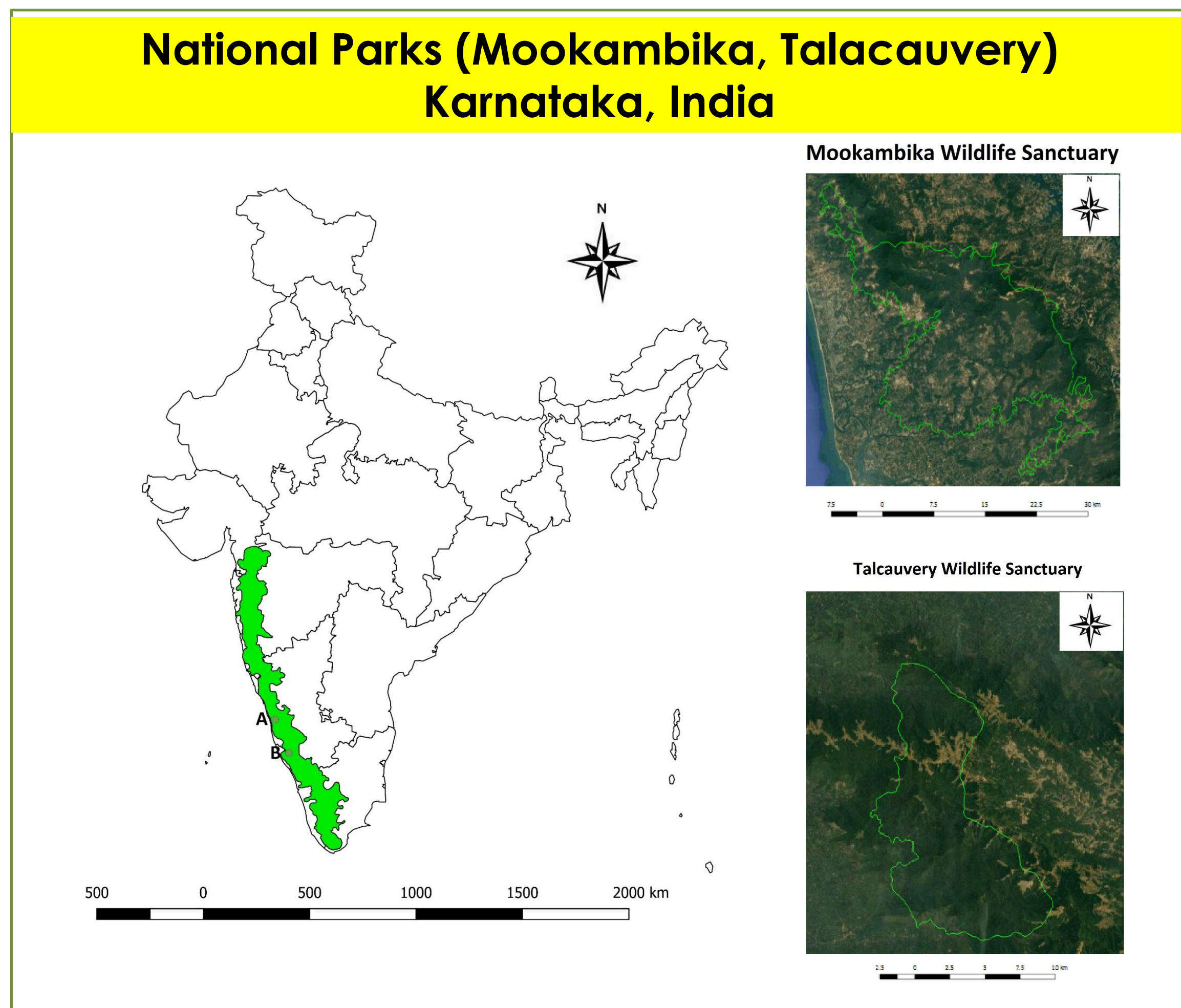


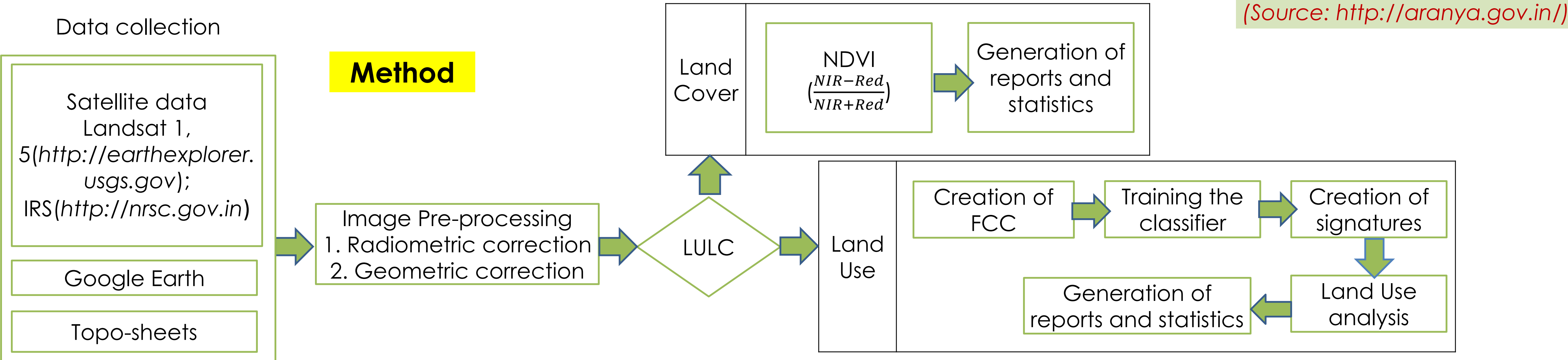
Landscape Dynamics: National Parks of Karnataka, India

Aim: To understand land use/land cover changes for evolving strategies towards conservation and sustainable management of protected areas.



National Park: Geography and Demography

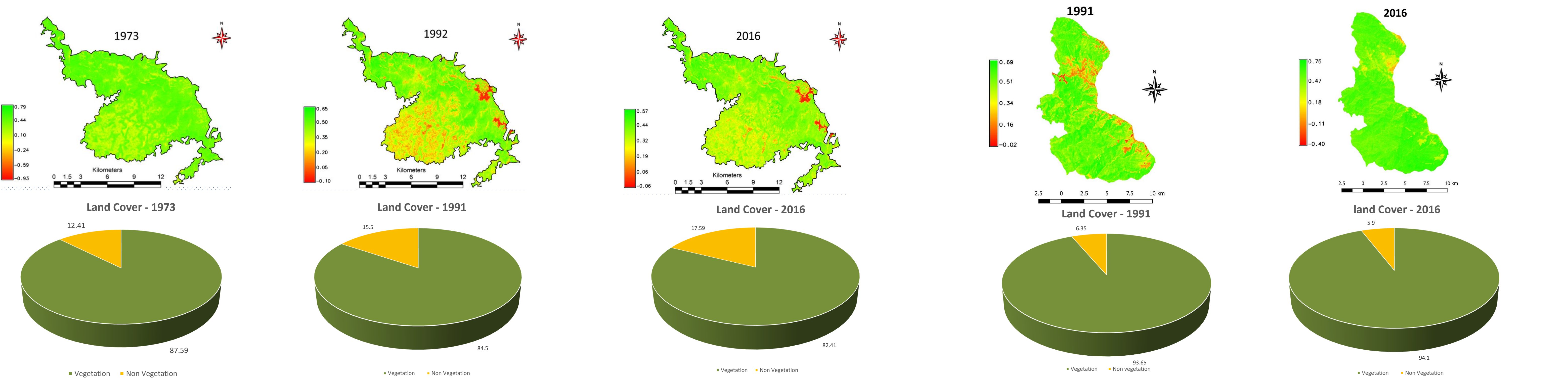
National Park	Talacauvery Wildlife Sanctuary	Mookambika Wildlife Sanctuary
Latitude	12° 17' 14" to 12° 26' 38" North	13° 42' to 13° 59' North
Longitude	75° 25' 23" to 75° 33' 15" East	74° 39' to 74° 50' East
Area	105.59 Sq. Km.	370.37 Sq. Km
Vegetation	Evergreen and semi-evergreen forests, shola grassland	Moist deciduous forests, semi-evergreen, evergreen forests, shola-grass land.
Flora	<i>Dipterocarpus indicus</i> , <i>Antiaris toxicaria</i> , <i>Kingiodendron pinnatum</i> , <i>Diospyros ebenum</i> , <i>Alstonia scholaris</i> , <i>Bischofia javanica</i> , etc.	<i>Dipterocarpus indicus</i> , <i>Calophyllum tomentosum</i> , <i>Hopea parviflora</i> , <i>Coscinium fenestratum</i> , etc.
Fauna	Tiger, Malabar Civet, Lion tailed macaque, Slender Loris, Asian Elephant, Clawless Otter, Slender Loris, Travancore flying squirrel, King cobra, Nilgiri flycatcher, etc.	Deer, Goar, Indian wild boar, porcupine, lion tailed macaque, Tiger, Leopard, Python, Elephant, Sloth bear, giant squirrel, hornbills, etc.
Rainfall	6000 mm to 7000 mm	6000 mm



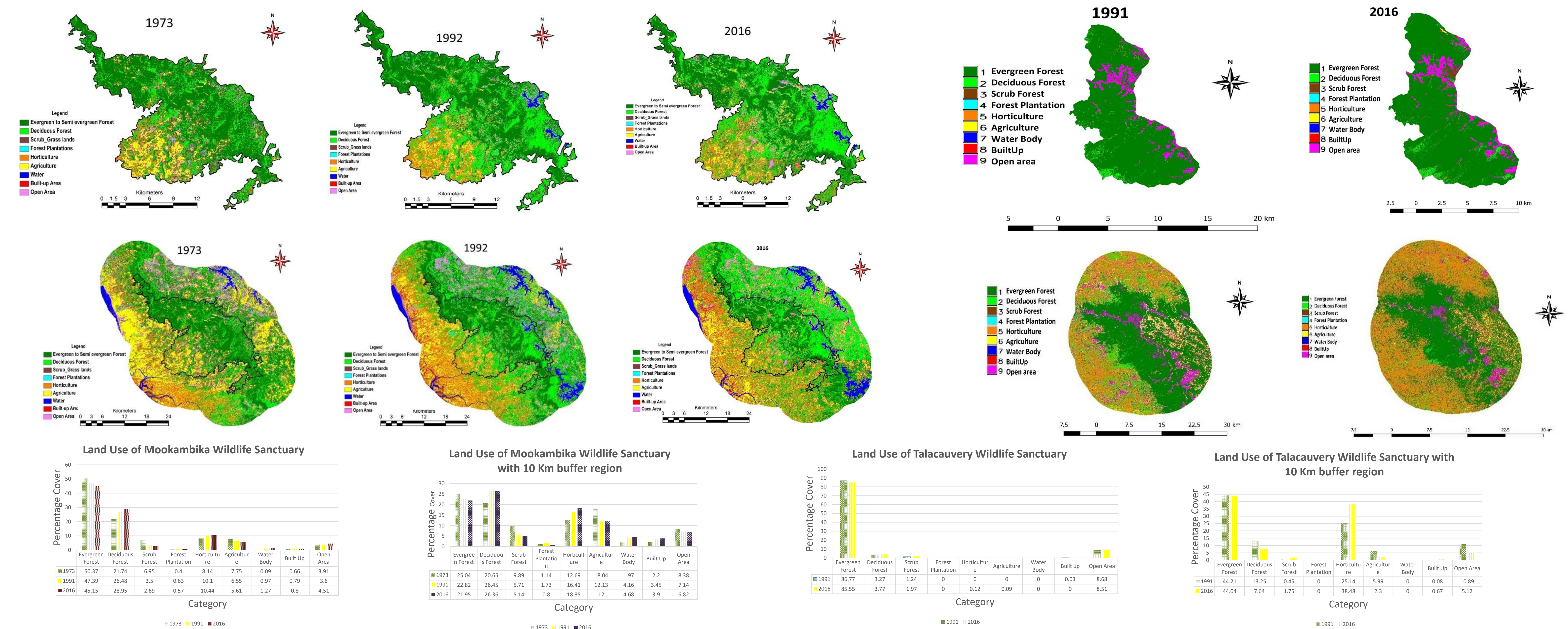
Benefits of Forest

Direct Benefits	Indirect Benefits
1. Source of food supply.	1. Control climate patterns.
2. Source of fuel.	2. Control global warming.
3. Source of oxygen.	3. Ecotourism.
4. Source of drug-Department.	4. supporting materials chemical industries.
5. Wildlife habitat.	

LAND COVER DYNAMICS



Land Use Dynamics



Conclusion: 1. Restriction on any activities that will contribute to deforestation.
 2. Rejuvenation of degraded patches through planting of native vegetation (grasses, shrubs, trees) that provide food and fodder to the animals.
 3. Creation of water bodies and rejuvenation of existing water bodies to enhance the water holding capacity.

Nimish Gupta, Bharath Setturu, Ramachandra T.V.

Energy and Wetland Research Group, Centre for Ecological Sciences, Indian Institute of Science, Bangalore 560012
 Email: cestvr@ces.iisc.ernet.in, Phone: 080 22933099, Web: <http://ces.iisc.ernet.in/energy>, <http://ces.iisc.ernet.in/biodiversity>

RANBIR AND CHITRA GUPTA SCHOOL OF INFRASTRUCTURE DESIGN AND MANAGEMENT

INDIAN INSTITUTE OF TECHNOLOGY KHARAGPUR
 भारतीय प्रौद्योगिकी संस्थान, खड़गपुर